



TE PŪRONGO O TE TAU

ANNUAL REPORT: 2021 - 2022

RĀRANGI TAKE

1. Confirm AGM minutes 13 February 2022,
2. Ātiawa ki Whakarongotai Charitable Trust Annual Report 2021/2022,
 - I. Tumuaki Report
 - II. Manaaki Kapiti
 - III. Taiao Unit
 - IV. Mahi mō te Taiao: The Waikanae Jobs for Nature Project
3. Ātiawa ki Whakarongotai Holdings Ltd Annual Report 2021/2022,
4. Wharekohu Fisheries Ltd Annual Report 2021/2022,
5. Appointment of Auditor/Accountant,
6. Election of Trustees,
7. General Business.



TUMUAKI REPORT

TE PŪRONGO O TE TAU

FOR YEAR ENDING: 2021-2022

Kei ngā uri manawa rahi o Ātiawa ki Whakarongotai tēnā koutou. Me maumahara ana tātou ki a rātou ngā tini aituā e whakangaro atu ki te pō. He mihi whakawhetai hoki ki te hunga e taimaha ana e māuiui ana, me kī, kia piki te ora, kia piki te kaha, kia piki te māramatanga i ngā wā katoa.

Ko tēnei te pūrongo o ngā tino mahi o ngā kaitieki o Te Poari i te tau 2021 – 2022, e whakamōhio ake ki ngā tai o Te Kāhui Maunga o Taranaki me te iwi o Ātiawa ki Whakarongotai, ‘i te iti i te rahi te katoa’. Tēnā koutou katoa.




HE MIHI WHAKAWHETAI - OUR GRATITUDE & THANKS

On behalf of the Board, we reflect positively on this reporting period from April 2021 to March 2022 and we remember especially those members of our whānau, hapū and iwi whom we have farewelled. They are not forgotten and should continue to be celebrated as we continue to strive to honour their legacies and develop our future capacity as an iwi.

We also recognize the dedicated commitment of the many individual iwi members who volunteer their valuable time and experience to contribute to the significant outcomes of the Charitable Trust at both governance and operational levels, and for our overall iwi wellbeing in general.

We welcomed three new Trustees elected in 2022, Aperahama Barrett, Janine Huxford and Te Raukura Solomon. The Board has also continued to be well represented by Cherie Seamark, Chris Gerretzen and myself. We thank each individual Trustee for their decision to stand for election and to provide governance to the Board, and the confidence of our iwi membership to endorse them.

We also thank our kaiwhakahaere Janine Davis and Linda Kohunui-Hartman for managing our office administration and for their liaison with our Board, and for the many demands they are asked to manage.



NGĀ UTU WHAKAHAERE - FINANCIAL MANAGEMENT

The financial reporting and accountability of the Trust is not only critical to our Governance and Operational responsibilities, it also exemplifies integrity, honesty and trust, which has enabled us to meet our contractual, operational, administrative and iwi objectives and responsibilities. The Trust generated a total revenue of \$1,742,188 for the year ending 31 March 2022, which is an increase of 185% compared to 2021.

The significant increase in revenue also reflects the increase in the demands we face across the many portfolios of the Trust and our successful growth in capacity, including Taiao (Environmental Unit), Mahi Mō Te Taiao (Waikanae Jobs for Nature), Manaaki-Kapiti (including Hora Te Pai clinical services), Treaty Claims (Wai 2200 Porirua ki Manawatū district Inquiry & Takutai Moana MACA Application) and the Asset Holdings Ltd (Fish Quota & Housing/Papakāinga).

We should all be very proud of the iwi members who are our Trustees, Directors, Project Managers and Co-Ordinators, Consultants, and principal Advisors and knowledge holders.

Our Kaitiakitanga Monitoring Programme greatly enhances our ability to engage with our Treaty partners through the application of kaupapa based assessments and monitoring of our relationships. Again, Ātiawa ki Whakarongotai is leading this new approach and our confederation partners recognise our progressive and innovative expression of tino rangatiratanga.

The Directors of our Asset Holdings Ltd. have consistently supported the Trust, Whakarongotai Marae and our Rangatahi. Their embarkment into the papakāinga/housing portfolio through the

procurement of external funding and engagement with iwi members is another progressive initiative normally aligned to post-settlement iwi and there are very exciting future prospects for us.

NGĀ WHAKAPIRINGA - RELATIONSHIPS

We acknowledge the shared whakapapa and generational relationships that identifies the iwi of Ātiawa ki Whakarongotai, and we also recognize the partnerships and relationships we all work very hard to maintain with Kāwanatanga as mana whenua. The expression of our tino rangatiratanga is non-negotiable and the Trust continues to explore new and dynamic ways of sustaining our responsibilities to Te Tiriti o Waitangi.

Greater Wellington Regional Council (GWRC)

Iwi Chairs from Ātiawa ki Whakarongotai, Ngāti Raukawa and Ngāti Toa collectively agreed that our preferred next steps of our partnership with Greater Wellington Regional Council are: -

1. A.R.T. iwi to express our collective interest in resetting the relationship between ourselves and GWRC by negotiating/signing a Te Tiriti o Waitangi based partnership agreement,
2. Work further on developing and refining the Treaty House model until we are happy with it,
3. Once the Partnership Agreement is signed, we will propose an operating model based on the Treaty House model,
4. We will negotiate with GWRC the funding and resource model for making it all work.

Kāpiti Coast District Council (KCDC)

The adoption of our independent Iwi Partnership Review and the 7 recommendations by the Kāpiti Coast District Council (KCDC) was a priority for the last reporting period. We knew this would lead to a transformational partnership and to the benefit of our confederation partners Ngāti Toa and Ngā Hapū o Ōtaki, and again led by our small iwi.

We also received an encouraging indication from KCDC to make provision for a significant increase in the Capacity Funding budget through the draft Long Term Plan process. This was a very

significant outcome for our iwi and has provided further confidence as we reset our relationship with KCDC as a result of our review.

Crown Forest Rental Trust (CFRT)

Our Crown Forestry Rental Trust (CFRT) contracts have continued to be successfully negotiated and renewed during this reporting period and this funding has enabled the Trust to continue supporting individual claimants and claimant groups, and to generate and share information during the remaining Ngāti Raukawa phase of the Wai 2200 Waitangi Tribunal inquiry. The Trust's retention of CFRT client status is a prerequisite to qualify for ongoing funding into 2023. At the time of compiling this annual report the Waikanae Report for Te Ātiawa Ngāti Awa Claims (a pre-publication of the future volume of the Porirua ki Manawatū report) has been released, which confirms several breaches of Te Tiriti o Waitangi. We also welcomed Tihema Baker as our new Pou Ākau Project Manager for the Takutai Moana (MACA) application and co-ordinator of the Claims Committee.

Kāpiti Community Health Network Establishment – (KCHNGG)

The Trust successfully negotiated a contract with Capital and Coast DHB for our iwi to host and co-chair the Community Health Network Establishment Governance Group. Our iwi input led by Cherie and myself has included drafting the Terms of Reference, finalising the Charter, developing the Data Management Agreement, Cultural Advice, iwi representation for weekly Operations Team meetings, increasing knowledge of equity amongst Health providers, including Marae based education sessions, developing resources for practices and health providers to identify social issues, support for kaumātua, specifically frail elderly, and Māori Data Sovereignty and the tikanga (principles) aligned to Te Tiriti o Waitangi. Our joint leadership of KCHNGG has also greatly influenced financial and professional support for our iwi led Manaaki Kāpiti COVID-19 Hub response, and the initiative taken to establish the first Iwi Māori Partnership Board in Aotearoa - Ātiawa Toa Hauora Partnership Board.

TE TIKANGA HAUMARU RESPONSE

The continued disruption experienced from the COVID-19 Delta restrictions in 2021, promoted a new and strategic approach by the Trust for our iwi led Tikanga Haumaru Response Plan, which was effectively implemented through the creation of Manaaki-Kāpiti, and in partnership with our iwi health provider Hora Te Pai.

The Trust commends our Tikanga Haumaru Response Team for managing the hauora of not only our iwi members and mātāwaka but the community of the Kāpiti Coast district in extraordinary times. Their outstanding efforts are reflective of our inherited values and principles as kaitiaki and pou tangata.

On behalf of Ātiawa ki Whakarongotai Charitable Trust, I recommend the adoption of the Annual Report for 2021 to 2022, and once again thank the Trustees, Directors, Project Managers and Co-Ordinators, Consultants, principal Advisors, Iwi representatives, kaitiaki and pou tangata for your significant contributions.

Nā reira, Kia Piki Te Ora,



André Baker
Chairman

FINANCIAL REPORT

FOR YEAR ENDING: 2021-2022

Ātiawa ki Whakarongotai Charitable Trust

Entity Information

"Who are we?", "Why do we exist?"

**For the year ended
31 March 2022**

Legal Name of Entity:*	Ātiawa ki Whakarongotai Charitable Trust
Type of Entity and Legal Basis (if any):*	Trust and Registered Charity
Registration Number:	CC45036
Entity's Purpose or Mission: *	Ko Te Ātiawa nō runga i te rangi Ko te toki tē tangatanga i te rā Taringa māngō, o te kete ngē Ue ha! Ue ha!

Since 2005, this Trust has been the mandated body to speak on matters affecting the collective interest of Ngā Uri o Te Ātiawa ki Kāpiti. Ātiawa ki Whakarongotai means the iwi comprising every person who is descended from a primary ancestor of Te Ātiawa, Ngāti Tama, Ngāti Mutunga and Ngāti Maru Wharanui such primary ancestors being those who remained living in Waikanae after 1848 and who identify with the land from Kukutauaki to Whareroa (seaward) inland to Pukemore and to Maunganui northward to Kapakapanui and Pukeatua to Ngawhakangutu then westward to Kukutauaki.

The Trust continues to develop its capability to provide support to Ngā Uri o Te Ātiawa ki Kāpiti on political, social, cultural, economic, and environmental kaupapa.

Entity Structure: *

The current structure for Ātiawa ki Kāpiti comprises the Trust, Ātiawa ki Whakarongotai Asset Holding Company Limited ("AKWL") and Wharekohu Fisheries Limited ("WFL"), both of which are 100% owned subsidiary companies of the Trust. This structure was effectively developed from the framework offered by the Māori Fisheries Act 2004. The current structure is one where the Trust is the ultimate owner/kaitiaki and governing body for all assets and activities of the Trust.

Main Sources of the Entity's Cash and Resources:*

The main source of income is through external contracts.

Main Methods Used by the Entity to Raise Funds:*

An annual grant from Ātiawa ki Whakarongotai Holdings Limited.

Entity's Reliance on Volunteers and Donated Goods or Services: *

The Trustees provide voluntary time in regards to the Trust, there is however an understanding that the Trustees are paid an honorarium based on hui attendance.

Contact details

Physical Address:
Postal Address:
Phone/Fax:
Email:
Website:

10 Parata Street, Waikanae, Kāpiti
P O Box 509, Waikanae
04 293 1538
admin@teatiawakikapiti.co.nz
<http://teatiawakikapiti.co.nz/>

Ātiawa ki Whakarongotai Charitable Trust
Performance Report
For the year ended
31 March 2022

Contents

	Page
Non-Financial Information:	
Entity Information	1
Statement of Service Performance	2
Financial Information:	
Statement of Financial Performance	5
Statement of Financial Position	6
Statement of Cash Flows	7
Statement of Accounting Policies	8
Notes to the Performance Report	9
Independent Review Report	14

Ātiawa ki Whakarongotai Charitable Trust

Statement of Service Performance

"What did we do?", When did we do it?"

For the year ended
31 March 2022

Description of the Entity's Outcomes*:

The principles of Ātiawa ki Whakarongotai are guided by the words

"He Korōria ki te Atua;
He Maungarongo i te whenua;
He whakaaro pai ki ngā tāngata katoa"

and include:

- The preservation and protection of the spiritual well-being of the Members of Ātiawa ki Whakarongotai; and
- The preservation of the dignity and integrity of the Members of Ātiawa ki Whakarongotai; and
- The advancement of the Members of Ātiawa ki Whakarongotai through the development of their social, cultural, economic, and educational aspirations through competent leadership and effective, efficient, and totally accountable management of their commercial and non-commercial collective resources.

Output Measures:

Description and Quantification (to the extent practicable) of the Entity's outputs as per our guiding principles:	Actual*	Actual*
	This Year	Last Year
Manaakitanga <ul style="list-style-type: none">• Promote and fund Rangatahi hui and initiatives (2 per year, changed due to covid)• Promote and held hui about housing kaupapa	1 2	5 N/A (new 2022)
Whanaungatanga <ul style="list-style-type: none">• Increase registration database membership	20	38
Kotahitanga Communication: <ul style="list-style-type: none">• Increase recipients of our monthly email panui (25 per year). Audience participation: 57% Often 8% Sometimes 25%• Increase recipients with social media (Facebook). Total: reached 44,158k	101 292	63 103

OTHER TRUST RELATED ACTIVITIES:

Asset Holding Company:

Our Asset Holding Company successfully secured funding through Te Puni Kōkiri to conduct a Housing Feasibility Study (ongoing), signing of a Memorandum of Understanding with Hāpai for social and economic housing outcomes, and ongoing work with HUD and Hāpai through a Memorandum of Understanding - Poplar Ave, Paraparaumu

Manaaki Kāpiti:

From our efforts to deliver the Tikanga Haumaru COVID-19 Pandemic Response Plan in 2020, we were able to meet the needs of our community by establishing a response service called Manaaki Kāpiti. Manaaki Kāpiti service operation commencement; 1 January 2022 to 31 March 2022.

By the numbers for three-month period:

Manaaki response

- 221 kai parcels from January – March (Supporting 721 adults and 320 children) plus approximately 300 hygiene packs
- Clinical support and advice: 180 hauora COVID home visits plus daily clinics at boarding houses and hotspots
- 25,000 Rapid Antigen Tests distribution to organisations and health services
- 300 Oximetre distributions to whānau in need of monitoring

Additional notes:

Iwi-led and operated Covid Response was up and running as a full service in late January, contract negotiations with the District Health Board and the Ministry of Social development were completed in late December for service commencement in January.

The service establishment included:

- The refurbishment of a fit for purpose building
- Recruitment and on-boarding of 18 kaimahi for manaaki services in late February and March
- Integration of service delivery with Hora Te Pai Health services for clinical support and advice for whānau impacted by COVID.

Appropriate infrastructure was put in place to support service delivery including, ICT setup and office equipment to support call centre and administration requirements, lease hold improvements and operational costs, medical equipment, and resource to support COVID and clinical response, operational policy development, Payroll systems, vehicle leases, branding and design, kai storage essentials and warehouse, etc.

Taiao:

Taiao outcomes for this period included the establishment of Waikanae Ki Uta Ki Tai (WKUKT) Project and The Waikanae Jobs for Nature.

Both initiatives, are in partnership with Kāpiti Coast District Council (KCDC), Greater Wellington Regional Council (GWRC) and the Department of Conservation / Te Papa Atawhai. Both are founded by the same six key kaupapa of Whakapapa, Wairua, Mana, Māramatanga, Te Ao Tūroa, and Mauri.

Waikanae Ki Uta Ki Tai

This Treaty house partnership have identified common values for the Waikanae Awa. The Waikanae ki uta ki Tai Pou represent our Iwi in this project, they are dedicated to the future preservation, sustenance, and restoration of our awa tapu, Waikanae. One of our big celebrations was the foresight to successfully tender for the Jobs for Nature contract and deliver on key priorities as per their action plan.

The Waikanae Jobs for Nature

Waikanae Jobs for Nature is delivering on training and capacity building for Ātiawa ki Whakarongotai and the Kāpiti community. Achieving environmental restoration work streams funded by DOC under the Jobs for Nature Programme. Aligning with Ātiawa ki Whakarongotai Kaitiakitanga Plan and action plan priorities identified by the Pou under Waikanae Ki Uta Ki Tai.

Work includes

- Sustainable whenua planning
- Weed control and management
- Animal and pest control
- Planting
- Monitoring

Training and employment numbers:

Tauira (Trainees)	Jun-21	Total
Te Ātiawa /A.R.T Affiliated	5	16
Total	5	18
%	100%	89%
Kaimahi (Employees)	Jun-21	Total
Te Ātiawa /A.R.T Affiliated	8	21
Total	13	37
%	62%	57%

Highlights of 2022:

- 10 Whakarongotai Marae Visits
- Working with kaitiaki on 970 hectares of Māori whenua
- 3000 ha of goat control
- 18 slept over in the wharehūi
- 3km of fencing completed
- 35 hectares of weed control
- 33 people engaged at our Tūrangawaewae
- 1000 hectares of monitoring
- 160 Tamariki experience the Awa

Takutai Moana:

Our Takutai Moana kaupapa is funded (retrospectively) by Te Arawhiti.

Activities included:

- Pou Ākau appointed to project manage the Trust's Takutai Moana application
- Expert historian commissioned to undertake historical research in support of application
- Oral evidence-gathering programme commissioned as part of the historical research.

Ātiawa ki Whakarongotai Charitable Trust

Statement of Financial Performance

"How was it funded?" and "What did it cost?"

For the year ended

31 March 2022

	Note	Actual* This Year \$	Actual* Last Year \$
Revenue			
Donations, fundraising and other similar revenue*	1	30,020	43,078
Revenue from providing goods or services*	1	1,666,869	545,081
Interest, dividends and other investment revenue*	1	990	1,817
Other revenue	1	44,308	19,257
Total Revenue*		1,742,188	609,233
Expenses			
Volunteer and employee related costs*	2	211,772	82,150
Costs related to providing goods or services*	2	649,169	317,363
Grants and donations made*	2	218	120
Other expenses	2	10,822	1,529
Total Expenses*		871,981	401,162
Surplus/(Deficit) for the Year*		870,207	208,071

Ātiawa ki Whakarongotai Charitable Trust

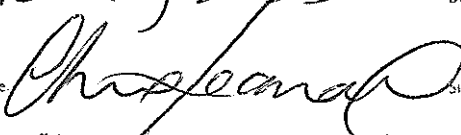

Statement of Financial Position

"What the entity owns?" and "What the entity owes?"

As at
31 March 2022

	Note	Actual* This Year \$	Actual* Last Year \$
Assets			
Current Assets			
Bank accounts and cash*	3	828,819	323,346
Debtors and prepayments*	3	951,672	238,081
Investments	3	67,469	66,797
Total Current Assets		1,847,959	628,224
Non-Current Assets			
Property, plant and equipment*	4	263,664	1,400
Total Non-Current Assets		263,664	1,400
Total Assets*		2,111,623	629,624
Liabilities			
Current Liabilities			
Creditors and accrued expenses*	3	387,170	34,607
Employee costs payable*	3	7,281	4,151
Unused donations and grants with conditions*	3	284,038	27,938
Total Current Liabilities		678,489	66,697
Total Liabilities*		678,489	66,697
Total Assets less Total Liabilities (Net Assets)*		1,433,134	562,927
Accumulated Funds			
Accumulated surpluses or (deficits)*	5	1,433,134	562,927
Total Accumulated Funds*		1,433,134	562,927

*This performance report has been approved by the Trustees, for and on behalf of the Ātiawa ki Whakarongotai Charitable Trust.

Date:	10 May 2023	Date:	28 0 PAENGANIHĀ 2023
Signature:		Signature:	
Name:	Chere Seamark	Name:	ANDRE BAKER
Position:	Deputy Chairperson	Position:	CHAIRMAN

Ātiawa ki Whakarongotai Charitable Trust

Statement of Cash Flows

"How the entity has received and used cash"

For the year ended
31 March 2022

	Actual* This Year \$	Actual* Last Year \$
Cash Flows from Operating Activities*		
Cash was received from:		
Donations, fundraising and other similar receipts*	29,586	61,228
Receipts from providing goods or services*	1,350,210	391,327
Interest, dividends and other investment receipts*	1,187	2,457
Net GST	(8,572)	(913)
Cash was applied to:		
Payments to suppliers and employees*	671,414	403,214
Donations or grants paid*	218	120
Net Cash Flows from Operating Activities*	700,780	50,765
Cash flows from Investing and Financing Activities*		
Cash was received from:		
Receipts from the sale of investments*	0	49,079
Cash was applied to:		
Payments to acquire property, plant and equipment*	194,635	732
Payments to purchase investments*	672	0
Net Cash Flows from Investing and Financing Activities*	(195,307)	48,347
Net Increase / (Decrease) in Cash*	505,473	99,112
Opening Cash*	323,346	224,234
Closing Cash*	828,819	323,346
This is represented by:		
Bank Accounts and Cash*	828,819	323,346

Ātiawa ki Whakarongotai Charitable Trust

Statement of Accounting Policies

"How did we do our accounting?"

For the year ended
31 March 2022

Basis of Preparation*

Ātiawa ki Whakarongotai Charitable Trust has elected to apply PBE SFR-A (NFP) Public Benefit Entity Simple Format Reporting - Accrual (Not-For-Profit) on the basis that it does not have public accountability and has total annual expenses of equal to or less than \$2,000,000. All transactions in the Performance Report are reported using the accrual basis of accounting. The Performance Report is prepared under the assumption that the entity will continue to operate in the foreseeable future.

Goods and Services Tax (GST)*

All amounts are recorded exclusive of GST, except for Debtors and Creditors which are stated inclusive of GST. In addition, the Trust received funding from Crown Forestry Rental Trust (CFRT). CFRT transactions do not contain GST due to CFRT not being required to account for GST as the nature of their activities, funding or reimbursing claimants their expenditure relating to the presentations and negotiations of claims before the Waitangi Tribunal, does not meet the definition of Goods and Services in Section 2 of the GST tax Act 1985. Funding received by claimants is by definition not subject to GST.

Income Tax

Ātiawa ki Whakarongotai Charitable Trust is wholly exempt from New Zealand income tax having fully complied with all statutory conditions for these exemptions.

Grants

Grants received are included in operating revenue. If particular conditions are attached to a grant that would require it to be repaid if these conditions are not met, then the grant is recorded as a liability until the conditions are satisfied.

Bank Accounts and Cash

Bank accounts and cash in the Statement of Cash Flows comprise cash balances and bank balances (including short term deposits) with original maturities of 90 days or less.

Investments

Bank term deposits for periods exceeding 90 days are classified as investments and are initially measured at the amount invested. Interest is subsequently accrued and added to the investment balance.

Plant and Equipment

Plant and Equipment are recorded at cost less accumulated depreciation. Assets are depreciated over their estimated useful lives on a diminishing value basis. The estimated useful lives of the assets are:

Computer Equipment	2 years
Improvements	2.5 to 50 years
Office Equipment	2 years

Changes In Accounting Policies*

There have been no changes in accounting policies during the financial year (last year - nil).

Ātiawa ki Whakarongotai Charitable Trust

Notes to the Performance Report

For the year ended
31 March 2022

Note 1 : Analysis of Revenue

Revenue Item	Analysis	This Year \$	Last Year \$
Donations and other similar revenue	Ātiawa ki Whakarongotai Holdings Limited	30,000	30,000
	Koha	20	3,078
	Te Puni Kōkiri	0	10,000
	Total	30,020	43,078
Revenue Item	Analysis	This Year \$	Last Year \$
Revenue from providing goods or services	Capital and Coast DHB	831,733	0
	Crown Forestry Rental Trust	23,154	28,039
	Environmental Consultancy	225,917	163,458
	Greater Wellington Regional Council	273,702	104,330
	Kāpiti Coast District Council	158,162	157,132
	Ministry of Social Development	103,042	0
	M2PP	0	67,768
	Other Revenue	51,160	24,356
Total		1,666,869	545,081
Revenue Item	Analysis	This Year \$	Last Year \$
Interest, dividends and other investment revenue	Interest	990	1,817
	Total	990	1,817
Revenue Item	Analysis	This Year \$	Last Year \$
Other revenue	Other Revenue	44,308	19,257
	Total	44,308	19,257

Ātiawa ki Whakarongotai Charitable Trust

Notes to the Performance Report

For the year ended
31 March 2022

Note 2 : Analysis of Expenses

Expense Item	Analysis	This Year \$	Last Year \$
Volunteer and employee related costs	ACC	137	204
	Honorarium	37,844	27,793
	Salaries and Wages including Kiwisaver	173,791	54,152
	Total	211,772	82,150

Expense Item	Analysis	This Year \$	Last Year \$
Costs related to providing goods or services	Administration Costs	82,789	31,307
	Consultancy	359,914	209,479
	Crown Forestry Rental Trust	23,154	28,039
	Other Contract Costs	183,312	48,538
	Total	649,169	317,363

Expense Item	Analysis	This Year \$	Last Year \$
Grants and donations made	Koha	218	120
	Total	218	120

Expense Item	Analysis	This Year \$	Last Year \$
Other expenses	Audit Review Fee	950	950
	Depreciation	9,872	579
	Total	10,822	1,529

Ātiawa ki Whakarongotai Charitable Trust

Notes to the Performance Report

For the year ended
31 March 2022

Note 3 : Analysis of Assets and Liabilities

Asset Item	Analysis	This Year \$	Last Year \$
Bank accounts and cash	Petty Cash	255	255
	ANZ Cheque Account	458,670	104,669
	ANZ 02 Account	138,110	127,585
	ANZ 10 Account	201,629	70,903
	ANZ 29 Account	29,729	18,254
	ANZ 30 Account	426	1,680
	Total	828,819	323,346
Asset Item	Analysis	This Year \$	Last Year \$
Debtors and prepayments	Accounts receivable	939,724	233,247
	Prepayments	9,800	2,715
	Withholding Tax	2,148	2,119
	Total	951,672	238,081
Asset Item	Analysis	This Year \$	Last Year \$
Investments	Short term deposits	67,469	66,797
	Total	67,469	66,797
Liability Item	Analysis	This Year \$	Last Year \$
Creditors and accrued expenses	Trade and other payables	161,213	14,186
	Accrued expenses	151,160	6,220
	GST Payable	74,796	14,201
	Total	387,170	34,607
Liability Item	Analysis	This Year \$	Last Year \$
Employee costs payable	Leave Liability	7,281	4,151
	Total	7,281	4,151
Liability Item	Analysis	This Year \$	Last Year \$
Unused donations and grants with conditions	Income in advance	284,038	27,938
	Total	284,038	27,938

Ātiawa ki Whakarongotai Charitable Trust

Notes to the Performance Report

For the year ended
31 March 2022

Note 4 : Property, Plant and Equipment

This Year					
Asset Class*	Opening Carrying Amount*	Purchases	Sales / Disposals	Current Year Depreciation and Impairment*	Closing Carrying Amount*
Office equipment*	1,400	121,733	0	8,083	115,050
Computers (including software)*	0	3,250	0	271	2,979
Improvements*	0	147,153	0	1,518	145,635
Total	1,400	272,136	0	9,872	263,664

Last Year					
Asset Class*	Opening Carrying Amount*	Purchases	Sales / Disposals	Current Year Depreciation and Impairment*	Closing Carrying Amount*
Office equipment*	831	1,420	272	579	1,400
Total	831	1,420	272	579	1,400

Note 5: Accumulated Funds

This Year				
Description*	Capital Contributed by Owners or Members*	Accumulated Surpluses or Deficits*	Reserves*	Total*
Opening Balance	0	562,927	0	562,927
Surplus/(Deficit)*	0	870,207	0	870,207
Closing Balance	0	1,433,134	0	1,433,134

Last Year				
Description*	Capital Contributed by Owners or Members*	Accumulated Surpluses or Deficits*	Reserves*	Total*
Opening Balance	0	354,856	0	354,856
Surplus/(Deficit)*	0	208,071	0	208,071
Closing Balance	0	562,927	0	562,927

Ātiawa ki Whakarongotai Charitable Trust

Notes to the Performance Report

For the year ended
31 March 2022

Notes 6-10

Note 6: Commitments & Contingencies

Commitments

There are no commitments as at balance date (2021; nil)

Contingent Liabilities and Guarantees

There are no contingent liabilities or guarantees as at balance date (2021; nil)

Note 7: Other

Significant Grants and Donations with Conditions which have not been Recorded as a Liability*

There are no significant grants or donations with conditions which have not been recorded as a liability.

Goods or Services Provided to the Entity in Kind*

Description*	Amount*
Nil	Nil

Assets Used as Security for Liabilities*

Nature and Amount of Borrowing*	Nature and Amount of Asset Used as Security*
Nil	Nil

Note 8: Assets Held on Behalf of Others*

Description of the Assets Held*	Name of Entity of Whose Behalf Assets are Held*
Nil	Nil

Note 9: Related Party Transactions*

Description of Related Party Relationship*

Ātiawa ki Whakarongotai Charitable Trust is the sole shareholder in Ātiawa ki Whakarongotai Holdings Limited and this is a related party relationship in terms of the financial reporting standards. During the year Ātiawa ki Whakarongotai Holdings Limited provided a charitable distribution to the Trust totalling \$30,000 (2021; \$30,000). They also reimbursed costs totalling \$4,359 (2021; nil). At balance date Ātiawa ki Whakarongotai Holdings Limited owed the Trust \$504 (2021; nil) and the Trust owed Ātiawa ki Whakarongotai Holdings Limited \$2,894 (2021; \$1,324). Cherie Seamark (Trustee) is a Director of Ātiawa ki Whakarongotai Holdings Limited.

André Baker (Trustee and Chairperson) is contracted to complete various work within the claims portfolio, all on normal business terms totalling \$11,682 (2021; \$2,065).

Dr Mahina-ā-rangi Baker, daughter of the Chairperson, is contracted as the Pou Takawaenga for the Taiao/Environmental, all on normal business terms totalling \$332,643 (2021;

Cherie Seamark (Trustee) was contracted to manage the Covid response on behalf of the Trust, all on normal business terms totalling \$9,350 (2021; \$5,000).

Chris Gerretzen (Trustee) is contracted to complete various work on behalf of the Trust, all on normal business terms totalling \$344 (2021; nil).

Kara Kearney (Trustee) was contracted to manage the Covid response on behalf of the Trust, all on normal business terms totalling \$8,575 (2021; \$5,000).

Rāwhiti Higgott (Trustee) is contracted to complete various work on behalf of the Trust, all on normal business terms totalling \$600 (2021; \$2,721).

All Trustees received honorarium to attend Hui-a-Mārama for the Charitable Trust Board. Total gross received for the year ending 31 March 2022:

Albert Ellison (ceased May 21)	\$179
André Baker	\$2,269
Cherie Seamark	\$2,269
Chris Gerretzen	\$1,693
Janine Huxford (from March 22)	\$179
Kara Kearney (ceased Feb 22)	\$2,328
Aperahama Barrett (from March 22)	\$179
Rāwhiti Higgott (ceased Feb 22)	\$2,865
Te Raukura Solomon (from March 22)	\$179

Note 10: Events After the Balance Date*

The Covid-19 event has had a limited financial impact on the Performance report for the year ended 31 March 2022. Refer to additional notes in the Statement of Service Performance (Last Year - Nil).

MANAAKI KAPITI

AN ĀTIAWA KI WHAKARONGOTAI INITIATIVE

FOR YEAR ENDING: 2021-2022

OUR MOEMOEA

Our rohe is a place where iwi are leading best practice through bespoke Ātiawatanga service delivery- Moving away from silos, complex systems and mainstream services that have not addressed inequities and disparities for our people and communities.

Ātiawa ki Whakarongotai Charitable Trust and Hora te Pai Health Services have come together to bring COVID care and manaaki to all whanau living within our tribal boundaries - this initiative is called Manaaki Kapiti

This annual report shares our journey of establishing a new service for whānau, hapū, iwi and the wider community.

Manaakikapiti.org.nz | @manaakikapiti1



MANAAKI KAPITI - *Getting started*

In early December 2021, a proposal to the DHB, outlining a new way of delivering hauora and manaaki to whānau impacted by COVID-19 was submitted. Ātiawa ki Whakarongotai Charitable Trust was awarded a contract for service with Capital & Coast DHB (now known as Te Whatu Ora) and the Ministry of Social Development (MSD) with the service commencing in late December 2021.

This annual report captures Manaaki Kapiti start up, it highlights key milestones achieved from service conception in late December 2021 to 30 March 2022, and covers:

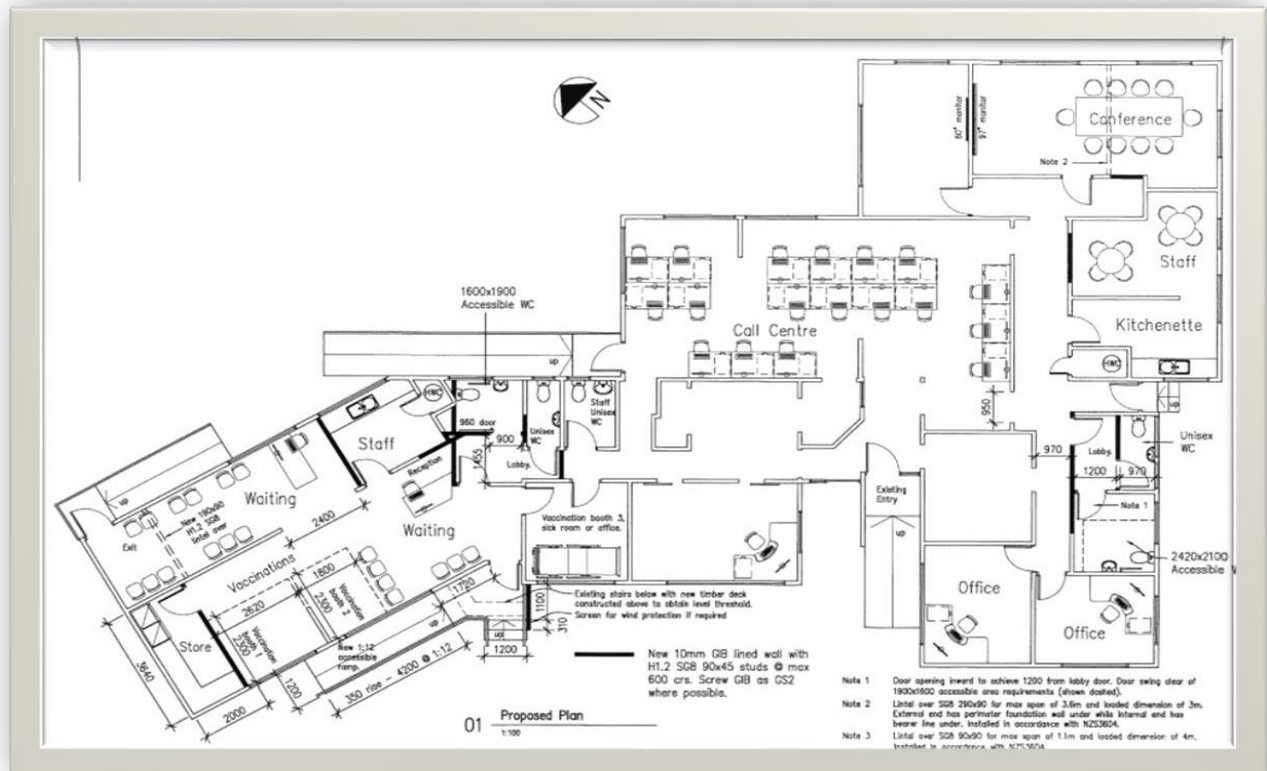
- A build project – Manaaki Kapiti Headquarters..... page 4
- Recruitment and service specifications... page 5
- Communications and brandingpage 6
- Snapshot of our impactpage 7
- Financial tracking..... page 8



BUILD PROJECT - MANAAKI KAPITI HEADQUARTERS

In December 2021, through the significant influence of the Trust Board and the support of the Asset Holding Company, a building was acquired for Manaaki Kapiti COVID outreach service.

From January to March, a significant amount of refurbishment and fit-out was undertaken to transform an unused building to Manaaki Kapiti headquarters.



Manaaki Kapiti now has several offices, two hi-tech meeting rooms, kitchen facilities, a call centre and a community vaccination clinic. It can accommodate up to 30 kaimahi, with carparking for manuhiri and kaimahi and is centrally located.



Pic 1- design and layout of Manaaki Kapiti building

Pic 2- transforming the space

RECRUITMENT_ - FINDING THE RIGHT KAIMAHI

Manaaki Kapiti established its full COVID response service in February 2022, after a recruitment drive to find clinicians, kaimanaaki and a call centre team - we were able to provide care to whanau and community, 7 days per week. Our services include:

OUR KAI HUB AND RAUEMI

Our distribution hub for kai, some medicines, COVID PPE, Rapid Antigen Tests for local pharmacies, doctors, and community groups and whanau isolating.

KAIMANA AKI SERVICE

A mobile team dedicated to supporting whānau needs – like prescription pickups, oximeter and medical drop offs and kai deliveries.

CALL CENTRE

Often our first point of contact, this team look after requests and provide check-in phone calls during isolation period.

HAUORA SERVICE

A team of medical professionals and clinicians are available to assess and monitor health during isolation.

TANGATA WHAIKAHA

Disability advisory- a service working with tangata whaikaha/disability whānau.

COMMUNITY CONNECTORS SERVICE

A navigation and wayfinding service to help whanau impacted by COVID, this service helps access government entitlements and other support whanau might need.



From the outset of service setup, Manaaki Kapiti implemented a range of kaimahi development pathways, from in-house training to external learning opportunities. In March, we put in place an eight – month long programme of weekly learning clinics to encourage our kaimahi to learn more about matauranga Māori values and concepts and practice basic reo -our goal is to enable all kaimahi to be confident in sharing their pepeha with others.

SERVICE SPECIFICATIONS -OUR MAHI

With 20 kaimahi at Manaaki Kapiti, we have put in place operation systems, referral pathways and processes that enable whānau to receive the full spectrum of care across hauora and manaaki. We have the capability to respond to:

Whānau needs:

- Test whānau for COVID (swabbing and rapid antigen tests)
- Deliver kai and prescriptions to whanau during their isolation period.
- Deliver special equipment like oximetres, masks and hygiene essentials.
- Provide hauora advice and hauora home visits.
- Get financial assistance for whanau who needs a helping hand.
- Connect whānau to other services like MSD or a GP
- Support tangata whaikaha and their whanau that are impacted by COVID
- Source and deliver other essential items like clothing and blankets.
- Provide regular contact with whanau during their isolation period (txt, phone and visits)

The wider community:

- Provide PPE gear and Rapid Antigen Tests to medical centres, pharmacies and G P's
- Provide Rapid Antigen Tests and masks in bulk to local schools and colleges, marae, churches and community groups.
- Provide regular COVID clinics and support to accommodation providers, including supported living facilities, tangata whaikaha and disability providers.



Support Isolation and Quarantine (SIQ) Facility:

SIQ facilities are set up around the region to provide temporary accommodation for whanau who are COVID positive but can't stay at home or are homeless.

Manaaki Kapiti work alongside MSD and the Māori wardens provide to provide manaaki and hauora support to one of the regions SIQ facilities.

COMMUNICATIONS AND BRANDING - OUR TOHU

In March, we started work on resources for sharing important information about how to stay safe during the pandemic and how to access important services.

- We started a social media and digital campaign to make sure whanau were receiving important information.
- We launched a website to help whanau navigate services.
- We started developing a whanau COVID care plan- to help whanau plan for 7-10 days of isolation.

As part of our communications and branding work, we adopted a *tohu* specifically designed for Manaaki Kapiti. The *tohu* captures our connections to Taranaki and Te Waewae Kapiti o Tara rūau ko Rangitāne (Kapiti Island). The four waves represent the four tides of Tangaroa.

It is also important that our new *tohu* showcases the partnership between Ātiawa ki Whakarongotai and Hora te Pai coming together to deliver Manaaki Kapiti services. Both organisation's *tohu* sit alongside Manaaki Kapiti to form our overall brand.

We would like to acknowledge the talents and generosity of our whanaunga and rangatahi who were responsible for developing our communications, our brand, and our resources.



SNAPSHOT

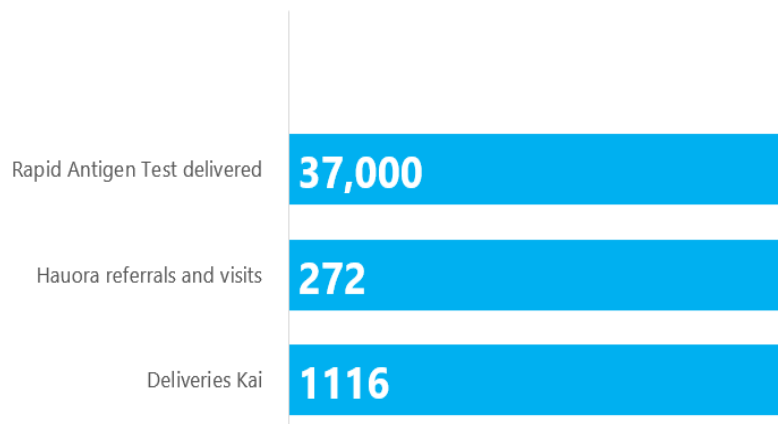
IMPACT REPORT : Poutū-te-rangi 2022

Manaaki Kapiti services were set up to provide an immediate response to help whānau living within our tribal boundaries. Part of our service brief was to contact COVID positive whānau to respond to any kai and welfare/manaaki needs while in isolation.

Our hauora team contacted COVID positive whanau to assess any medical or health issues, providing over the phone contact and in-home visits.

In our first three months of operating, we had become a main distributor of essential COVID items and by the end of March had distributed over 37,000 Rapid Antigen Tests to whanau, colleges and schools, local medical centers and community organisations.

Snapshot



Our clinical team received approximately 40 referrals for medial support to whanau per week and were making two in-home visits per day to whānau who required medical attention during their COVID isolation period.

Our Kaimanaaki team had deliver over 460 meals and 353 kai packs to whānau who were required to isolate. Over January, February, and March we also delivered hundreds of hygiene packs with masks, sanitizers, gloves, and other hygiene products to help whanau stop the spread.

FINANCES

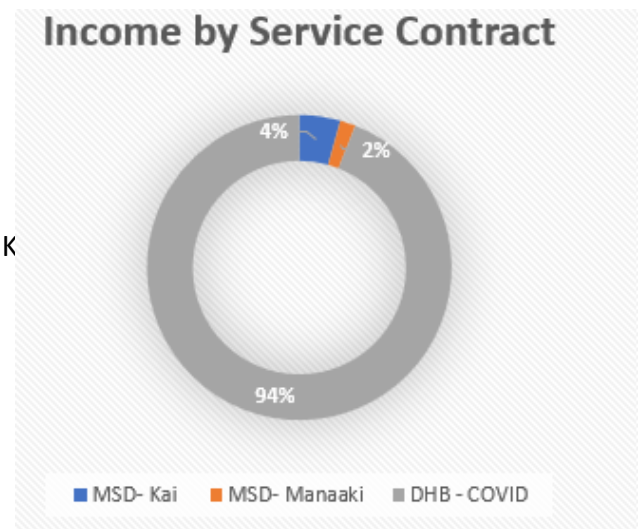
TRACKING OUR FINANCES : Poutū-te-rangi 2022

This section of the report is intended to give an overview of the financial performance of Manaaki Kapiti. It captures income and expenses associated with the service set up for its first three months of operation.

Manaaki Kapiti has three main income sources through its contracts for services across two funders, these are:

1. Ministry of Social Development – Funding for Manaaki Services.
2. Ministry of Social Development – Funding for K
3. Capital and Coast District Health Board- Care in the Community.

The District Health Board funding makes up the majority of Manaaki Kapiti income with MSD funding for kai and welfare making up around 6 %.



As of 31 March 2022, Manaaki Kapiti had an operating revenue of \$968,162.

As part of Manaaki Kapiti service establishment, a dedicated budget was allocated for set up and refurbishment, this is captured as Leasehold improvements and fixed assets and makes up 46% of total expenses in this period, while 54% of expenses are attributed to employee and operation expenses.

In March 2022, Manaaki Kapiti had been notified of its success in securing additional funding to support kai infrastructure and operations relating to a kai hub and a warehouse for storing medical equipment and kai.

In the coming months Manaaki Kapiti will apply for funding to enhance our pandemic response.





TE TAIAO REPORT

FOR YEAR ENDING: 2021-2022

APPOINTMENT OF TAIAO COORDINATOR:

The Trust took a significant step forward in appointing a new Taiao Coordinator. Mel McCormick, a mokopuna of Uncle Manny Parata, was appointed to the role in February 2022.

REPORT STRUCTURE

This Annual Report will be structured in accordance with the key kaupapa toko iho as set out in our Iwi Kaitiakitanga Plan.



KEY KAUPAPA : WHAKAPAPA & WAIRUA

‘We maintain our way of life as Ātiawa ki Whakarongotai’

‘The environment is a place that supports healthy wairua of the people. It is clean, calm, safe and conflict free.’

‘Responsiveness’ is a key service Te Taiao provides on behalf of the Trust which involves dealing with a highly regular influx of requests for engagement for all manner of matters that relate to the environment. We average two new projects requiring response per day in addition to standard resource consent processing. In order to uphold our whakapapa connection to our rohe, and to ensure that the wairua of our people, the wider community and the environment are protected, we have to carefully prioritise how we expend our time and resources.

This report is a summary of key matters that Te Taiao have engaged with through the reporting year.

- Te Taiao responded to 143 resource consent applications in the reporting year.
- Te Taiao responded to six archaeological authority applications in the reporting year.
- Te Taiao delivered a total of 86 projects that included both Mana Whenua Assessments (CIA) in response to resource consents or other activities that involved statutory requirements to engage with mana whenua, or broader environmental projects
- The following eight resource management projects either identified Ātiawa ki Whakarongotai as an affected party or had other statutory triggers which required in depth engagement to determine appropriate outcomes:
 - ❖ KCDC Paraparaumu Wastewater Treatment Plant Upgrade Proposal
 - ❖ KCDC Stormwater Management Framework and upgrades
 - ❖ KCDC District Plan Change
 - ❖ Takutai Kāpiti
 - ❖ Waikanae Library Redevelopment
 - ❖ Kārewarewa urupā resource consent applications
 - ❖ District Growth Strategy
 - ❖ Arvida Retirement Home Development

KEY KAUPAPA: MANA & MĀRAMATANGA

‘Decision-making is informed by iwi knowledge’

‘People are able to live their lives in the rohe of Ātiawa ki Whakarongotai in harmony with te taiao.’

Two key projects in this reporting year have been making significant contributions to upholding our aspirations in relation to mana and māramatanga.

KAITIAKI MONITORING:



Our Kaitiaki Monitoring programme is in its last year of monitoring the post-construction effects of the M2PP Expressway. This is being used to pilot a permanent Kaitiaki Monitoring Programme for the rohe. We anticipate the results of this programme to be reported in the next year, but we have noted significant trends emerging in the presence of heavy metals in mahinga kai species, a loss of watercress sites, and a decline in people's contact with nature.

The surveying conducted as part of this project also looks at the health of our mātauranga Māori continuum and identifies a majority of respondents practicing and teaching various aspects of our knowledge, but fewer respondents practicing rongoā and toi Māori.



WAIKANA E KI UTA KI TAI: ACTION PLAN

The Pou have developed six Iwi Priority Actions to be included in the final Joint Action Plan:

1. Develop a Waikanae oriented education pathway for the people of Ātiawa
2. Implement a joint iwi and community programme to share connection to the Waikanae River
3. Initiate a partnered management model for Flood Protection Works on the Waikanae River
4. Create a living map that provides for integrated management of risk in the catchment
5. A Rongoā Waikanae programme addresses the trauma created by degradation of the River

6. Address current threats to mahinga kai species.

KEY KAUPAPA: TE AO TŪROA & MAURI

'The natural order and balance of the environment is maintained to support the security of people who rely upon it.'

'Land, waterways and mahinga kai are clean and free of pollutants'

The Taiao Unit has been working on various key environmental issues in the rohe that continue to pose risk to our land, waterways and mahinga kai.

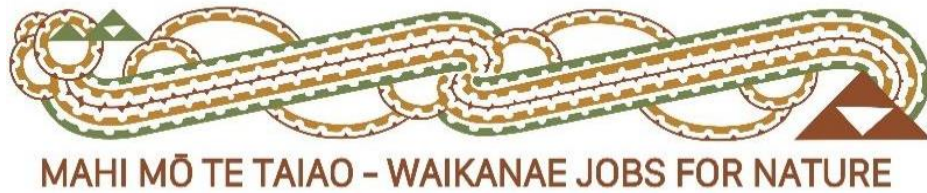
KCDC PARAPARAUMU WASTEWATER TREATMENT PLANT UPGRADE

KCDC have asked us to prepare a Cultural Impact Assessment for their application to renew their consents for the Wastewater Treatment Plant. The Plant has been non-compliant for some time and is a significant contributor to the declining health of the Mazengarb arawai and mouth of the Waikanae. We have engaged an engineer who is a national expert in wastewater treatment to assist our team on this. Greater Wellington Regional Council, who grants the consents required has also asked us to assist them in the assessment of KCDC's application.

KCDC STORMWATER MANAGEMENT FRAMEWORK AND CONSENTS



We are working in partnership with KCDC and the other two iwi on the development of a Stormwater Management Framework to guide KCDC's work. We have also engaged an independent ecologist to advise us on stormwater practices required to achieve an appropriate standard of ecological health. Concurrently KCDC is also engaging with us on a range of their consent applications for Stormwater works including global discharge and maintenance consents, Kenakena stormwater pump upgrade, Kākāriki Stream overflow and the Titoki Road upgrade.



FOR YEAR ENDING: 2021-2022



KAUPAPA - INTRODUCTION

Mahi mō te Taiao - Waikanae Jobs for Nature (WJ4N) project is an ambitious four-year effort to restore the Waikanae River catchment. It aims to build capacity and employment within Ātiawa ki Whakarongotai (ĀKW) and the Kapiti community and to achieve environmental integrity by implementing the principles of Te Ātiawa ki Whakarongotai Kaitiakitanga Environmental Management Plan. Ngā kaupapa, the six key values that underpin our work and objectives are Whakapapa, Mana, Mauri, Wairua, Māramatanga Te Ao Tūroa.

KO WAI MAT OU - WHO ARE WE?

Mahi mō te Taiao - Waikanae Jobs for Nature project is managed by Paekākāriki based environmental business, Groundtruth and is connected to the wider programme Waikanae Ki Uta Ki Tai 'Mountains to Sea' (WKUKT) programme established in 2019 to revitalise the Awa. Both initiatives are a "Tiriti (Treaty) House" partnership of Waikanae mana whenua Ātiawa ki Whakarongotai (ĀKW), Kāpiti Coast District Council (KCDC), Greater Wellington Regional Council (GWRC) and the Department of Conservation / Te Papa Atawhai. WKUKT vision is of Waiora: this community working together under a treaty house partnership, to enhance the lifeforce, vitality and special nature of the whole of the Waikanae Awa. We see the Awa as a living whole of which the community is an intertwined part. By protecting and revitalising the river, our community identity, wellbeing, and prosperity are also enhanced.

WJ4N includes a training programme to enhance Ātiawa ki Whakarongotai (ĀKW) as Kaitiaki within our iwi rohe. The vision of the project is to develop teams that can work across the rohe, helping to restore the awa, the ngahere, and ngā tamariki a Tāne that reside within. We have a native plant nursery to support our mahi, and regularly connect at Whakarongotai Marae to increase our cultural knowledge, connectedness and understanding of Ātiawatanga and kawa.



We treasure the opportunities for our kaimahi to connect with our Waikanae Awa Taiao and put their training into effect to help restore balance to our rohe.

We have a small team of field operators, kaitiaki who whakapapa to the rohe, and kaimahi, and this is an evolving space due to their growth and development and reaching out to other jobs within the community and Aotearoa. We draw on expertise within Groundtruth to help deliver particular skills and experience to grow our knowledge.

EMPLOYMENT & TRAINING

A key objective of Mahi mō te Taiao - Waikanae Jobs for Nature is to provide employment, with a particular focus on employment and training for Te Ātiawa Ki Whakarongotai.

The project has a target of providing 92 FTE (full time equivalents) over the whole project. An FTE is equivalent to 1 year of employment at 30 hours per week, or 1560 hours per year. This means that on average the project will employ and contract around 20 people over the four years. The aim is that 50 % of these employees and contractors will whakapapa to Ātiawa ki Whakarongotai, we are currently exceeding this statistic, and have attracted a large number of iwi members from Te Kotahitanga o Ātiawa, Ngāti Raukawa me Ngāti Toa Rangatira, our ART Confederation.

The aim is to build a strong team of skilled people who can continue to deliver the important work around restoration of the Waikanae Awa and catchment.



A full training programme and development pathway from introductory through to skills development and more detailed technical training is being provided. This includes training and assessment to unit standards, structured experience, and assessment of competence in different work areas. Kaimahi are supported to advance their employment preparedness and opportunities, with pathway

planning and connections in the wider rohe utilised to advance individual moemoea.

Throughout the training and ongoing employment there are regular opportunities to connect to our tūrangawaewae, Whakarongotai Marae. With each training programme commencing and graduating at the marae, descendants become accustomed with our kawa, roles and responsibilities and deepen their māramatanga through structured wānanga during noho, three times throughout the year. We observe strengthened relationships with whānau, hapū, and iwi, extending our iwi members' natural environment into wider marae and iwi activities, from attending working bees through to whaikōrero on our paepae. Pastoral care is an ongoing refinement and we are very grateful for the hononga with Hora Te Pai Health Services, Manaaki Kapiti and the various wānanga that focus on hauora, whare tapawha, whakapapa, identity, community connections and financial services.

Our project take this opportunity to acknowledge all the tautoko from our mandated iwi organisation, kaimahi and iwi members and all those who have guided and contributed to our journey thus far. We also need to acknowledge the impacts from Covid 19 which permeated through Aotearoa and we were not exempt - With small attendees at Marae events, including our Rā Whakapōtae (Graduations), Noho, iwi engagements and mandated vaccines that made the journey tough on kaimahi, taura and our iwi, influencing our ability to manaaki and whakawhanaungatanga at Whakarongotai, however, we hope that we stronger now having survived the journey and continue to grow in our mahi mō te Taiao.

Highlights from this financial year Include:

- Otaraua Whare 'Ako' Opening by the Iwi – 30 Oct 2021
- Nursery Ground scoped out at Otaraua
- Solar energy installed
- Tidy up of existing whare and workshop into operational spaces
- Three rōpū of taura graduated from our training programme during this year
- Mahi commenced on three Māori Whenua Blocks, amongst other catchment sites
- Pest Plant Control
- Pest Animal Planning
- Planting
- Fencing
- Mahinga Kai Monitoring and Tuna Ecology wānanga – Learning by Assisting our iwi Taiao unit, Matua Les Mullen and from experts within our ART Confederation.

- Commencing Tamariki Education delivery in our local kura

No reira, e kii ana te kōrero a Wi Tako Ngatata-i-te-Rangi,

“Tōku mouna tiketike, huinga mouri ora”

“My lofty mountain is the gathering place of my lifeforce.”

Nā te ngakau iti e,

Kristie Parata

Iwi Coordinator

Mahi mō te Taiao - Waikanae Jobs for Nature



KŌRERO FROM THE YEAR THAT WAS ...

Snapshot

Waikanae Jobs for Nature is delivering on training and capacity building for Te Ātiawa ki Whakarongotai and the Kapiti community. Achieving environmental restoration work streams funded by DOC under the Jobs for Nature Programme.

Aligning with Te Ātiawa ki Whakarongotai Kaitiakitanga Plan and action plan priorities identified by the Pou under Waikanae Ki Uta Ki Tai.

Work includes.

- Sustainable whenua planning
- weed control and management.
- animal and pest control
- planting
- monitoring

Training and employment numbers:

Tauira (Trainees)	Last year Jun-21	This year Jun-22	Total
Te Ātiawa /ART Affiliated	5	11	16
Total	5	13	18
%	100%	85%	89%

Kaimahi (Employees)	Last year Jun-21	This year Jun-22	Total
Te Atiawa /ART Affiliated	8	13	21
Total	13	24	37
%	62%	54%	57%

HIGHLIGHTS OF 2022

10
WHAKARONGOTAI
MARAE VISITS

WORKING WITH
KAITIAKI ON 970
HECTARES OF
MĀORI WHENUA



3000 HA OF GOAT
CONTROL



18 SLEPT OVER IN
THE WHARENUI



3KM OF FENCING
COMPLETED



35 HECTARES OF
WEED CONTROL



33 PEOPLE
ENGAGED AT OUR
TŪRANGAWAEWAE



1000 HECTARES OF
MONITORING



160 TAMARIKI
EXPERIENCE THE
AWA





ASSET HOLDING COMPANY REPORT

FOR YEAR ENDING: 2021-2022

The asset holding company has a triple role in our iwi support and administration. Firstly, is the legal requirement of the Maori Fisheries Act 2005 to hold and safeguard the fisheries settlement quota and shares separate from the parent Mandated Iwi Organisation, Atiawa ki Whakarongotai Charitable Trust, as hei taonga tuku iho, a continuing asset for future generations. Secondly, both the Holding Company and the Trust are registered charitable organisations set up to benefit and protect our iwi members and their wider community. To that end the earnings of the holding company provide financial support for the Trust, the marae and tangihanga. Finally, but of considerable importance, is the involvement with the wider Māori fishing industry interests through local, regional, and national inter-iwi representation.

To that can be added the positive and worthwhile benefits drawn from our membership and support of inter-iwi initiatives in the catch and marketing of our annual quota. Our modest crayfish quota is joined with other iwi in the Port Nicholson partnership, and similarly we provide quota and benefit from joint marketing in our support of the Sealord partnership. These arrangements give us the benefit of both marketing larger parcels and also the participation in the marketing.

In spite of a difficult year in which Covid affected production as well as marketing we have been fortunate to achieve a modest gain in earnings. Part of this was because of reduced inter-iwi activity.

Industry agreement to reduce hoki catch as a conservation measure and grow the size of the fish for future catch reduced income at first but there was a compensating increase in world

prices brought about by Covid induced shortages of other fish. We also benefitted from the Chinese restrictions on imports of Australian crayfish.

Prospects for the current year, however, are not as bright. Directors anticipate income from fish quota leasing will be reduced, particularly from crayfish.

Covid also affected the number of tangi held on marae during the past year and consequently the need for our support. However, our charitable effort has been directed to supporting iwi initiatives and joint community charitable activity which our iwi leads. We have increased our

ability to hold frozen product which means we can draw on fish products from Sealord at Nelson using their transport arrangements.

There has also been a lessening of inter-iwi activity, such as the FMA8 forum, and the replacement of hui with on-line Zoom which, while it is a valuable saving in time, loses the kanohi ki kanohi importance. For example, we have not had the valuable Maori Fisheries Conference for three years.

Our finances are sound, and we have good reserves that guarantee an earning to support our commitment to the parent Charitable Trust. However, we have gone through a period where earnings from our maturing investments have been lower. In the current financial year, however, there is some recovery.

Iwi housing initiatives that we have taken under the wing of the Asset Holding Company will be reported on separately. They have not to date required financial support as they have been separately funded.

In accordance with the statutory requirements of the Māori Fisheries Act 2005, directors declare that in the year under review no settlement quota has been sold or pledged as security.



SUMMARY: HOUSING REPORT

Ātiawa ki Whakarongotai aspire to increase our economic and cultural footprint in our rohe. ĀkWHL, with the tautoko of our IMO, is focused on understanding our options to invest in housing assets. This kaupapa has two primary foci:

1. To explore and provide housing options for kaumatua (and whānaunga in need)
2. To increase our asset base and financial position

In June 2020 ĀkWHL entered into a Māori Housing Network Funding Agreement with Te Puni Kōkiri (TPK) who agreed to pay up to \$75,000 (exclusive of GST) to support us to complete a

papakainga planning process to build 6 x 2-bedroom, medium density kaumatua homes as part of our urban papakainga development on our whenua at 11 Elizabeth St, Waikanae (the “Project”).

The planning process has progressed to the extent that the Resource Consent Application is in the process of being submitted with KCDC. Refer *Appendix one* for a brief overview of the Project to date.

SUBSEQUENTLY:

The Project has led to ĀkWHL contemporaneously investigating additional housing investment/development options as follows:

- ❖ A possible Partnering Agreement with **Utauta Developments** for a portion of their proposed construction of circa 40 medium density mixture of 1,2 & 3 bedroom townhouses on their circa 4000 m2 block at Utauta St, Waikanae
- ❖ A possible Partnering Agreement with **Hāpai Development Limited**. Refer *Appendix two* for a brief overview our developing relationship with Hāpai

FUNDING

In addition to the TPK funding mentioned above, a relationship has been forged and conversations are ongoing with the **Ministry of Housing and Urban Development (HUD)**. The focus of this kaupapa is to ensure we are aware of how HUD can support (including fund) our housing aspirations. A summary of the activities to date:

- ❖ Dialogue regarding entering into a Partnering Agreement with HUD and Hāpai relating to a proposed multi-dwelling development at Poplar Ave, Raumati (Crown whenua) well underway (refer *appendix two* for additional context)
- ❖ HUD funded **Whakarongotai Housing Needs Assessment Grant** application for \$20,000 lodged and awarded (awaiting documentation exchange)
- ❖ TPK – we will continue to partner with TPK and apply for **both horizontal infrastructure assistance** and their project **Viability Assessment (PVAT)**
- ❖ Web view
- ❖ Registration of Interest (ROI) submitted for **HUD’s Affordable Rental Pathway – Affordable Housing Fund** (refer below). Currently in dialogue with them as they assess our submission. If successful, this will likely be a multi-million-dollar funding boost.



HUD'S AFFORDABLE RENTAL PATHWAY – AFFORDABLE HOUSING FUND

HUD has announced the first round of the Affordable Rental Pathway of the Affordable Housing Fund offering \$50 million of grant funding to not-for-profit organisations to deliver newly built affordable rental housing. These affordable rental homes will be for lower income people and whānau who can't afford a market rent but can't access public housing.

Funding is targeted in the following locations with the greatest need for an increased supply of affordable rentals for those on lower incomes:

- Auckland
- Tauranga-Western Bay
- Rotorua
- Napier-Hastings
- Wellington metro (including Wellington, Porirua, Lower Hutt, Upper Hutt and Kapiti), and
- Nelson-Tasman.

Not-for-profits include organisations such as community housing providers, Iwi and Māori housing providers, councils, and charitable trusts.

Registrations of Interest in the first round of the Affordable rental pathway are open until 24 August 2022.

If you are interested to know more, initially follow the link: [Affordable Housing Fund | Te Tūāpapa Kura Kāinga - Ministry of Housing and Urban Development \(hud.govt.nz\)](https://www.hud.govt.nz/affordable-housing-fund)



APPENDIX ONE

Ātiawa ki Whakarongotai Kaumātua Housing Development: 11 Elizabeth Street, Waikanae

Note: Larger map displayed

ĀTIWA KI WHAKARONGOTAI KAUMĀTUA HOUSING DEVELOPMENT

11 ELIZABETH STREET, WAKANAE



INDEX

A000	COVER PAGE
A001	INDEX
A002	DESIGN PROCESS
A003	LOCATION PLAN
A101	EXISTING SITE
A102	PROPOSED SITE
A103	LANDSCAPE & CUT & FILL PLANS
A110	FLOOR PLANS
A200	ELEVATIONS



PROJECT INFORMATION:

- Atiwa ki Whakarongotai Asset Holdings Ltd. own a piece of land at 11 Elizabeth Street, Wakanae.
- They had formerly housed their office which has now moved to Pukekohe.
- They would like to develop the vacant site to create Kaumātua housing for other members of the iwi who don't have access to affordable housing.
- The council and private sector are supporting the iwi to establish affordable housing that all iwi members to be connected with value built in their own family Pukekohe Village.
- This is an opportunity to create safe, warm, sustainable, affordable purpose-built housing that embodies iwi values and Whakarongotai identity and values.

DESIGN PROCESS:

- A collaborative design process has been undertaken to develop a concept design which included:
 - Preliminary interviews with Kaumātua to establish key project values/whānau
 - Three focused workshops with Kaumātua groups to progress the design

KEY GUIDING KAUPAPA:

• The rangatiratanga and exercising mana motuhake

- Change address to support the articulation of these values in the physical design.
- Build up an asset for the benefit of the people.
- Respectful address to Whānau.
- Sustainable building and services at the heart of Whānau.
- Shared House in Whakarongotai values and culture.
- Being connected through the development of new value, purpose-built housing, lifting the standard of social accommodation, high quality.
- Developing sustainable buildings & design, i.e. sets of being focused on the needs of Kaumātua and creating a sharing of resources.
- Opportunity to allow the iwi to be a demonstration of decolonisation.
- Shared House in Whakarongotai values and culture.
- Sustainable building and services at the heart of Whānau.
- Sustainable building and services at the heart of Whānau.

• Reclamation of land and identity dwelling on the whakapapa of the whānau

- The project is an asset for the benefit of all of the iwi.
- The impact to the iwi of the land through acknowledging its history and mana.
- Shared House in Whakarongotai values and culture.
- Sustainable building and services at the heart of Whānau.
- Sustainable building and services at the heart of Whānau.
- Sustainable building and services at the heart of Whānau.
- Sustainable building and services at the heart of Whānau.
- Sustainable building and services at the heart of Whānau.
- Sustainable building and services at the heart of Whānau.
- Sustainable building and services at the heart of Whānau.

• Aroha, Manaakitanga and Whakarongotai

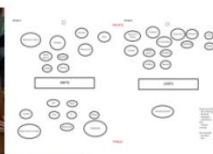
- Shared House in Whakarongotai values and culture.
- Sustainable building and services at the heart of Whānau.
- Sustainable building and services at the heart of Whānau.
- Sustainable building and services at the heart of Whānau.
- Sustainable building and services at the heart of Whānau.
- Sustainable building and services at the heart of Whānau.
- Sustainable building and services at the heart of Whānau.
- Sustainable building and services at the heart of Whānau.
- Sustainable building and services at the heart of Whānau.
- Sustainable building and services at the heart of Whānau.

• Support for iwi values (the whānau, hōkoro, āhau, āhau) and Kaumātua living

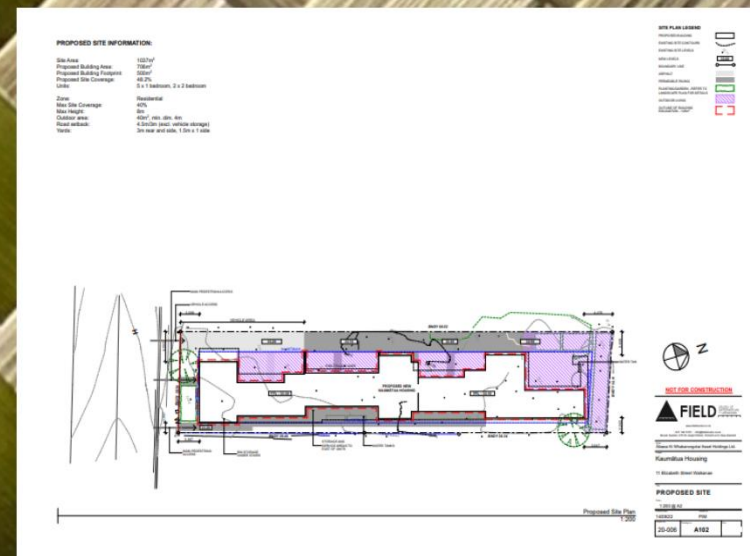
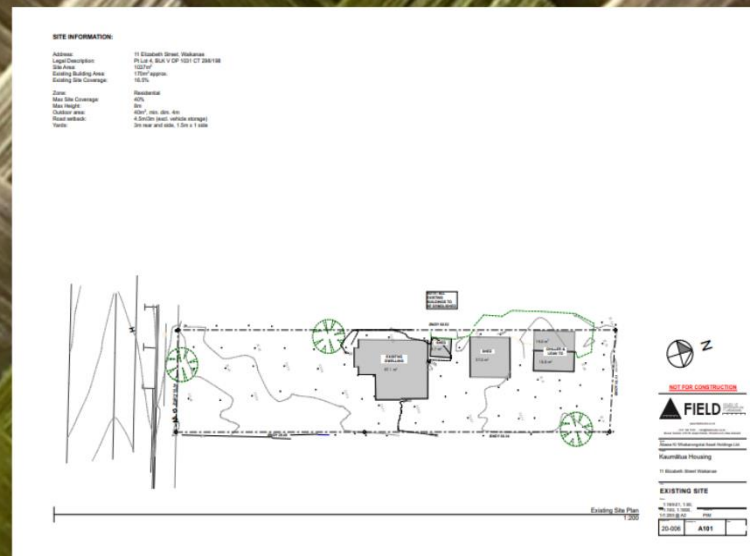
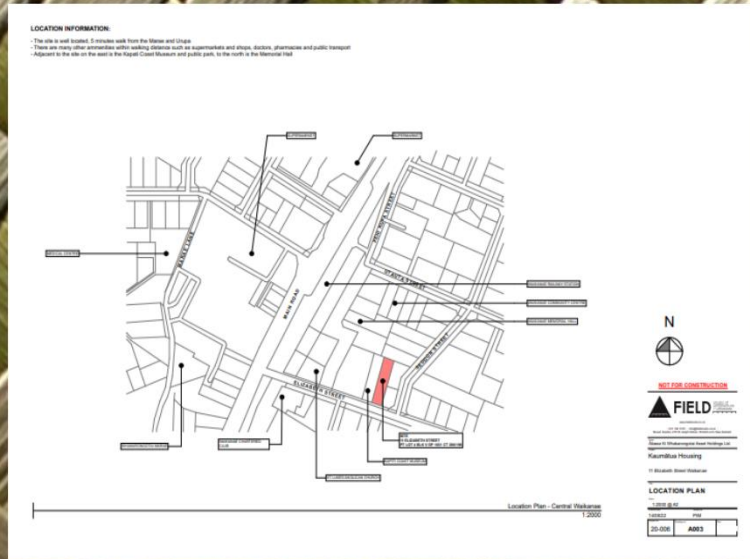
- Shared House in Whakarongotai values and culture.
- Sustainable building and services at the heart of Whānau.
- Sustainable building and services at the heart of Whānau.
- Sustainable building and services at the heart of Whānau.
- Sustainable building and services at the heart of Whānau.
- Sustainable building and services at the heart of Whānau.
- Sustainable building and services at the heart of Whānau.
- Sustainable building and services at the heart of Whānau.
- Sustainable building and services at the heart of Whānau.
- Sustainable building and services at the heart of Whānau.

• Kaitiaki

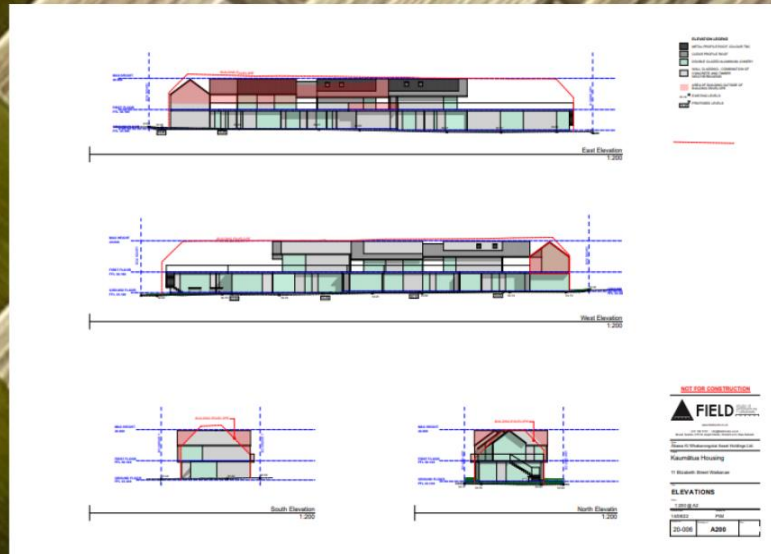
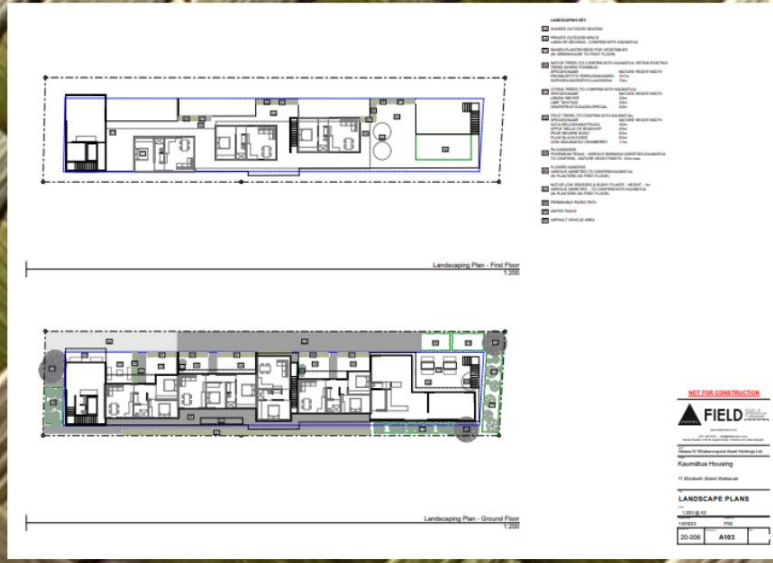
- Shared House in Whakarongotai values and culture.
- Sustainable building and services at the heart of Whānau.
- Sustainable building and services at the heart of Whānau.
- Sustainable building and services at the heart of Whānau.
- Sustainable building and services at the heart of Whānau.
- Sustainable building and services at the heart of Whānau.
- Sustainable building and services at the heart of Whānau.
- Sustainable building and services at the heart of Whānau.
- Sustainable building and services at the heart of Whānau.
- Sustainable building and services at the heart of Whānau.



KAUMĀTUA HOUSING DEVELOPMENT



KAUMĀTUA HOUSING DEVELOPMENT



Ātiawa ki Whakarongotai Holdings Limited
Company Directory

For the year ended:
31 March 2022

Registered office:	10 Parata Street Waikanae
Directors:	W E Carter C Seamark R J Spratt R T Kearney-Parata J L Housiaux
Company Number:	1728125
Reviewers:	Dennis Blank Chartered Accountants Waikanae
Accountants:	Openbook Solutions Limited Chartered Accountants Palmerston North
Bankers:	ANZ
Date of Formation:	22 November 2005
Shareholders:	Ātiawa Ki Whakarongotai Charitable Trust 1,000 ordinary shares



Ātiawa ki Whakarongotai Holdings Limited

Annual Report

For the year ended:
31 March 2022

The Directors present their Annual Report, including the financial statements of the Company, for the year ended 31 March 2021.

Section 211 of the Companies Act 1993 requires the following disclosures:

The business of the Company is Management of Fisheries Quota and Shares resulting from the Māori Fisheries Act 2004, and to hold investments for the benefit of the parent Charitable Trust. In the year under review the Company also undertook a Māori Housing Development Project funded by Te Puni Kokiri.

The initial research and development work for this feasibility project is ongoing and is included in the company accounts for the current year. The intention of directors is that this project should progress to the establishment of a separate commercial entity for its completion.

Directors' Disclosure

The Directors are listed on the Company Directory, no other Directors held office during the year. No remuneration was paid to Directors during the year.

No Director acquired or disposed of any interest in shares in the Company.

The Board of Directors received no notices from Directors wishing to use Company information received in their capacity as Directors which would not have ordinarily been available.

There were no entries recorded in the Register of Interests.

State of Affairs

The Directors are of the opinion that the state of affairs of the Company is satisfactory.

Reviewers

The reviewer was Dennis Blank CA. The review fees for the review of the 2022 financial statements are \$1,000 (2021; \$1,000) and non-review work \$0 (2021; \$0).

Donations

There were no donations made by the Company during the year (2020; nil).

Employee Remuneration

Pursuant to section 211(g) of the Companies Act 1993, no employee received remuneration and/or any other benefits exceeding \$100,000 during the year.

For and on behalf of the Board of Directors

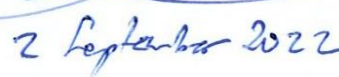
Director:



Dated:



Director:



Ātiawa ki Whakarongotai Holdings Limited

Entity Information

"Who are we?", "Why do we exist?"

For the year ended:
31 March 2022

Legal Name of Entity:*	Ātiawa ki Whakarongotai Holdings Limited
------------------------	--

Type of Entity and Legal Basis (if any):*	Company and Registered Charity
---	--------------------------------

Registration Number:	CC45327
----------------------	---------

Entity's Purpose or Mission: *
The Settlement Quota, the Income Shares and all other assets of the Company, whether of a revenue or capital character and all accretions to those assets are to be held by the Company as Trustee for the benefit of the charitable purposes to be promoted by the payment of dividends or other revenue or capital distributions to the Shareholder.

Entity Structure: *
The Company is an asset holding company. All its shares are held by Ātiawa Ki Whakarongotai Charitable Trust.
All the shares in Wharekohu Fisheries Limited are held in trust by Ātiawa Ki Whakarongotai Holdings Limited and are reported on separately.

Main Sources of the Entity's Cash and Resources: *
The Company receives and holds money from the Settlement Quota and Income Shares. They also receive revenue from investments.

Entity's Reliance on Volunteers and Donated Goods or Services: *
The Directors provide their time on a voluntary basis.

Contact details

Physical Address:	10 Parata Street Waikanae, 5036
-------------------	------------------------------------

Postal Address:	10 Parata Street Waikanae, 5036
-----------------	------------------------------------

Phone/Fax:	04 902 5208
------------	-------------

Email/Website:	atiawatrust@gmail.com hakepa2@gmail.com
----------------	--



Ātiawa ki Whakarongotai Holdings Limited

Statement of Service Performance

"What did we do?"

For the year ended
31 March 2022

Description of the Entity's Outcomes:

- Continued accountable stewardship of 2004 Fisheries Settlement Quota
- Prudent and effective management of Annual Catch Entitlement
- Profitable joint catch and marketing participation with other iwi
- Stewardship and husbanding of Company assets and reserves
- Support for charitable initiatives of allied iwi organisations

Description and Quantification (to the extent practicable) of the Entity's Outcomes: *	Actual* This Year	Actual* Last Year
Fish provided to tangi involving other iwi fishery interests	1	1
Fish provided to hui involving other iwi fishery interests	1	2
Participation in national iwi fishery forum hui	1	1
Participation in regional iwi fishery forum hui	2	2
Training programme for Rangatahi as associate Directors in Company succession planning	0	0
Additional Outcome Measures:		
Charitable distribution of fish to iwi families during Covid-19 lockdown.	3	2
Continued support of Charitable Trust by provision of office accommodation at cost, maintained role of alternative investment vehicle for parent Ātiawa ki Whakarongotai Holdings Limited to undertake financial activity that might be precluded by the provisions of the 2005 Maori Fisheries Act requiring separation of risk from the Settlement Quota Holding.		

Description and Quantification (to the extent practicable) of the Entity's Outcomes: *	Actual* This Year	Actual* Last Year
Achieving Business Plan	Yes	Yes
Company Net Worth	\$ 1,327,073	\$ 1,291,683
Increase in company net worth	\$ 35,390	\$ 20,529
Support for Charitable Trust, Marae and iwi	\$ 34,359	\$ 58,350
Support for Tangi and Hui	\$ 2,028	\$ 822
Fishing industry support and research	\$ -	\$ (475)
Fishing industry administrative levies	\$ 5,538	\$ 5,939



Ātiawa ki Whakarongotai Holdings Limited

Statement of Receipts and Payments

"How was it funded?" and "What did it cost?"

For the year ended:

31 March 2022

	Notes	Actual* This Year \$	Actual* Last Year \$
Operating Receipts			
Receipts from providing goods or services *	2	42,312	45,422
Interest, dividends and other investment income receipts *	2	43,494	28,590
Other operating receipts	2	6,347	81,563
Total Operating Receipts		92,153	155,575
Operating Payments			
Payments related to providing goods or services *	3	18,542	60,743
Grants and donations paid *	3	34,359	63,350
Other operating payments	3	13,182	18,400
Total Operating Payments		66,084	142,493
Operating Surplus or (Deficit)		26,070	13,082
Capital Payments			
Purchase of resources *		-	690
Increase/(Decrease) in Bank Accounts and Cash *		26,070	12,392
Bank accounts and cash at the beginning of the financial year *		632,165	619,773
Bank Accounts and Cash at the End of the Financial Year *		658,235	632,165
Represented by: *			
Cheque account		96,149	84,751
On call account		-	-
Savings account		-	-
Term Deposit account(s)		562,086	547,414
Total Bank Accounts and Cash at the End of the Financial Year *		658,235	632,165

This performance report has been approved by the Directors, for and on behalf of Ātiawa ki Whakarongotai Holdings Limited:

Date 2 September 2022
 Signature [Signature]
 Name WE CARTER
 Position DIRECTOR

Date 2 September 2022
 Signature [Signature]
 Name R. J. Spratt
 Position DIRECTOR



Ātiawa ki Whakarongotai Holdings Limited

Statement of Resources and Commitments

"what the entity owns?" and "what the entity owes?"

As at

31 March 2022

SCHEDULE OF RESOURCES		This Year	Last Year
		\$	\$
Bank Accounts and Cash (from Statement of Receipts and Payments)*		658,235	632,165
Money Held on Behalf of Others*			
Description*		Amount*	Amount*
Nil			
Money Owed to the Entity*			
Description*		Amount*	Amount*
Receipts due as a result of providing goods or services		-	111
Maori Authority credits		2,492	2,492
Advance - Wharekahu Fisheries Limited		5,000	5,000
Other Resources*			
Investments (refer to policies for detail on below values)		Cost or Current Value*	Cost or Current Value*
Aotearoa Fisheries (146 non voting)		172,280	172,280
Wharekahu Fisheries Limited		1,000	1,000
Area 2 Inshore Fisheries Limited		1	1
Deep Water Group		1	1
Various Species Quota		500,000	500,000
Wharekahu Fisheries Quota		4,500	4,500
SCHEDULE OF COMMITMENTS		This Year	Last Year
		\$	\$
Money Payable by the Entity*			
Description*		Amount*	Amount*
GST payable		1,527	3,913
Unpaid invoices		47	95



Ātiawa ki Whakarongotai Holdings Limited

Statement of Resources and Commitments

"what the entity owns?" and "what the entity owes?"

As at

31 March 2022

Other Commitments*

Description*

Nil

Amount*

Amount*

Guarantees*

Description*

Nil

Amount*

Amount*

SCHEDULE OF OTHER INFORMATION

This Year

Last Year

\$

\$

Grants or Donations with Conditions Attached (where conditions not fully met at balance date)*

Te Puni Kokiri

Amount*

14,862

Amount*

21,859

Resources Used as Security for Borrowings*

N/A

Amount*

Amount*



Ātiawa ki Whakarongotai Holdings Limited

Notes to the Performance Report

For the year ended
31 March 2022

Note 1: Accounting Policies "How did we do our accounting"

Basis of Preparation*

Ātiawa ki Whakarongotai Holdings Limited is permitted by law to apply PBE SFR-C (NFP) Public Benefit Entity Simple Format Reporting - Cash (Not-For-Profit) and has elected to do so. All transactions are reported in the Statement of Receipts and Payments and related Notes to the Performance Report on a cash basis.

Goods and Services Tax (GST)*

Ātiawa ki Whakarongotai Holdings Limited is registered for GST. Therefore amounts recorded in the Performance Report are exclusive of GST (if any). GST owing, or GST refunds due as at balance date are shown in the Statement of Resources and Commitments.

Investments

The value of shares held in Aotearoa Fisheries Limited was previously based on an annual independent valuation provided by Te Ohu Kaimoana. This valuation is no longer available. The Directors deem it prudent in present industry conditions not to assume any gain in the value of these shares in the year under review.



Ātiawa ki Whakarongotai Holdings Limited

Notes to the Performance Report

For the year ended
31 March 2022

Note 2 : Analysis of Receipts "How was it funded?"

Receipt Item	Analysis	This Year	Last Year
Receipts from providing goods or services		\$	\$
	ACE Lease	42,024	45,422
	Recoveries	288	-
	Total	42,312	45,422

Receipt Item	Analysis	This Year	Last Year
Interest, dividends and other investment income receipts		\$	\$
	Interest	20,334	19,989
	Dividends	23,160	8,601
	Total	43,494	28,590

Receipt Item	Analysis	This Year	Last Year
Other receipts		\$	\$
	GST	6,347	16,563
	TPK Grant	-	65,000
	Total	6,347	81,563



Ātiawa ki Whakarongotai Holdings Limited

Notes to the Performance Report

For the year ended
31 March 2022

Note 3 : Analysis of Payments "What did it cost?"

		This Year	Last Year
	Analysis	\$	\$
o providing goods or	Insurance	1,229	4,243
	Pataka-Hui/Tangi	2,028	822
	Office Expenses	1,269	1,855
	Repairs & Maintenance	106	4,747
	Levies	5,538	5,939
	Telephone, Tolls & Internet	1,162	472
	TPK Expenses	6,997	43,141
	Travel/Hui expenses	213	(475)
	Total	18,542	60,743

		This Year	Last Year
	Analysis	\$	\$
ns paid	Ātiawa ki Whakarongotai Charitable Trust	34,359	58,350
	AKWCT - Hui Rangatahi	-	-
	Advance Wharekohu Fisheries	-	5,000
	Total	34,359	63,350

		This Year	Last Year
	Analysis	\$	\$
yments	Accounting & Review Fees	1,947	2,506
	Wharekohu Fisheries Limited	870	1,833
	Legal Fees	1,632	-
	GST Paid	5,284	4,204
	GST	3,449	9,857
	Total	13,182	18,400



Ātiawa ki Whakarongotai Holdings Limited

Notes to the Performance Report

For the year ended
31 March 2022

Notes 4-7

Note 4: Correction of Errors*

Nil

Note 5: Related Party Transactions*

Description of Related Party Relationship*

C Seamark is a Director of Te Ātiawa ki Whakarongotai Holdings Limited and a Trustee of Te Ātiawa ki Whakarongotai Charitable Trust. The Trust holds 100% of the shares in Te Ātiawa ki Whakarongotai Holdings Limited.

W E Carter is a Director of Te Ātiawa ki Whakarongotai Holdings Limited and a Director of Wharekohu Fisheries Limited. The Company holds 100% of the shares in Wharekohu Fisheries Limited.

C Seamark is a Director of Te Ātiawa ki Whakarongotai Holdings Limited and a Director of Wharekohu Fisheries Limited. The Company holds 100% of the shares in Wharekohu Fisheries Limited.

R Spratt is a Director of Te Ātiawa ki Whakarongotai Holdings Limited and a Director of Wharekohu Fisheries Limited. The Company holds 100% of the shares in Wharekohu Fisheries Limited.

Note 6: Events After the Balance Date

The Covid-19 event has had a limited impact in the Performance report for the year ended 31 March 2022. (Last Year - Nil)

Note 7: Change in the Basis of Accounting

There have been no changes to the basis of accounting



Te Atiawa ki Whakarongotai Holdings Limited

Performance Report for the Year Ended 31 March, 2022

INDEPENDENT ASSURANCE PRACTITIONER'S REVIEW REPORT

To the Shareholders of Te Atiawa ki Whakarongotai Holdings Limited

Report on the Performance Report:

I have reviewed the accompanying performance report of the Te Atiawa ki Whakarongotai Holdings Limited which comprise the company directory, the annual report, entity information, the statement of service performance, the statement of receipts and payments for the year ended 31 March, 2022, the statement of resources and commitments as at 31 March, 2022, and the statement of accounting policies and other explanatory information.

The Responsibility of the Directors for the Performance Report:

The Directors of the Te Atiawa ki Whakarongotai Holdings Limited are responsible for the preparation and fair presentation of the 31 March, 2022 annual performance report in accordance with the New Zealand Tier 4 Public Benefit Entity Simple Format Reporting – Cash (Not-For-Profit) framework and for such internal control as the Directors determine is necessary to enable the presentation of the performance report that is free from material misstatement, whether due to fraud or error.

The Assurance Practitioner's Responsibility:

My responsibility is to express a conclusion on the annual performance report based on my review. I conducted my review in accordance with NZ SRE 2410 *Review of Financial Statements Performed by the Independent Auditor of the Entity*. NZ SRE 2410 requires me to conclude whether anything has come to my attention that causes me to believe that the performance report, taken as a whole, is not prepared in all material respects in accordance with the New Zealand Tier 4 Public Benefit Entity Simple Format Reporting – Cash (Not-For-Profit) framework. As the auditor of the Te Atiawa ki Whakarongotai Holdings Limited, NZ SRE 2410 requires that I comply with the ethical requirements relevant to the audit of the annual financial statements.

A review of the annual performance report in accordance with NZ SRE 2410 is a limited assurance engagement. I will perform procedures, primarily consisting of making enquiries, primarily of persons responsible for financial and accounting matters, and applying analytical procedures, and other review procedures.

The procedures performed in a review are substantially less than those performed in an audit conducted in accordance with International Standards of Auditing (New Zealand). Accordingly, I do not express an audit opinion on the performance report.

Other than in my capacity as assurance practitioner I have no other relationship with, or interests in, the Te Atiawa ki Whakarongotai Holdings Limited.

Te Atiawa ki Whakarongotai Holdings Limited

Performance Report for the Year Ended 31 March, 2022

INDEPENDENT ASSURANCE PRACTITIONER'S REVIEW REPORT

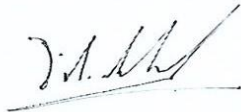
(continued)

Conclusion:

Based on my review, nothing has come to my attention that causes me to believe that the annual performance report of the Te Atiawa ki Whakarongotai Holdings Limited do not present fairly, in all material respects, the financial position of the Company as at 31 March, 2022 and of its financial performance for the year ended on that date, In accordance with New Zealand Tier 4 Public Benefit Entity Simple Reporting – Cash (Not-For-Profit) framework.

Report on Other Legal Regulatory Requirements:

There are no concerns to raised.



Dennis Blank CA
Chartered Accountant
02 September, 2022
Waikanae





W H A R E K O H U L T D

R E P O R T

FOR YEAR ENDING: 2021-2022

F U N D I N G

Wharekohu Fisheries Ltd

Cash Book for year ending 31 March 2022

BFwd	\$	1,750	Rent	\$	11,000
Rent	\$	11,478	Bank fees	\$	102
Interest	\$	1,050	Rates	\$	2,423
GST recd	\$	403	Accounting	\$	-
Recovery 2021 tax	\$	223	R & M	\$	58
			GST to pay	\$	182
			CFwd	\$	1,139
	\$	14,904		\$	14,904

Wharekohu Fisheries Ltd

Financial Performance for year ending 31 March 2022

Income	2022	2021	2020	2019
	\$		\$	\$
Interest received	1050	1053	1050	1050
Rent received	11478	7333	4000	4000
Sundry income	0	0	0	1239
Total income	\$ 12,528	\$ 8,386	\$ 5,050	\$ 6,289
Less Expenses				
Accountancy Fees	0	0	0	677
Bank Charges	102	94	97	32
Insurance	0	0	0	834
Licences and Registrations	0	0	0	0
Rates	2423	2356	2311	2,230
Repairs and Maintenance	58	904	7711	313
Rent paid	11000	10083	1833	0
Refund Income Tax to AHC	0	0	0	1239
Subscriptions	0	0	0	0
Telephones, tolls, internet	0	0	0	0
Total expenses	\$ 13,583	\$ 13,437	\$ 11,952	\$ 5,325
Net profit before depreciation	-1055	-5051	-6902	964
Less depreciation adjustment	90	100	115	122
NET PROFIT BEFORE TAX	-\$ 965.00	-\$ 4,951.00	-\$ 6,787.00	\$ 842.00
Income Tax Expense	0	0	0	0
NET PROFIT/(LOSS)	-\$ 965	-\$ 4,951	-\$ 6,787	\$ 842

Wharekohu Fisheries Ltd

Balance Sheet as at 31 March 2022

	2022	2021	2020	2019
CURRENT ASSETS	\$	\$	\$	\$
ANZ-Cheque Account	1139	1750	1602	9,139
ANZ Term Deposits	85,430	85,430	85,430	85,430
AHC advance	5014	5014	14	14
GST refund due	0	0	0	0
Taxation				
Total Current Assets	91583	92194	87046	94583
NON-CURRENT ASSETS				
Property, plant est.	350,000	350,000	350,000	240,000
TOTAL ASSETS	\$441,583	\$442,194	\$437,046	\$334,583
CURRENT LIABILITIES				
Accounts Payable	0	0	30	879
AHC advance	5014	5014		
GST to pay	182			
TOTAL LIABILITIES	5196	5014	30	879
NET ASSETS	\$436,387	\$ 437,180	\$ 437,016	\$ 333,70
represented by				
TOTAL EQUITY				
Share capital	1000	1000	1,000	1,000
Capital Profit on Asset	33,362	33,362	33,362	33,362
Land & Building revaluation			110,000	-
Retained Earnings	402,025	402,818	292,654	290,971
	\$ 436,387	\$ 437,180	\$ 437,016	\$ 325,33



Waea Tari: (04) 293 1538

Wāhi noho: 10 Parata Street/PO Box 509, Waikanae 5250

Pukamata: <https://www.facebook.com/TeAtiawaKiKapiti>

Whārangi Ipurangi: <http://teatiawakikapiti.co.nz/>