




ĀTIAWA KI WHAKARONGOTAI



# Annual Report 2023-2024





# **He Korōria ki te Atua, He Maungarongo I te whenua, He whakaaro pai ki nga tangata katoa**

The preservation and protection of the cultural well-being of the Members of Ātiawa ki Whakarongotai;

The preservation of the dignity and integrity of the Members of Ātiawa ki Whakarongotai;

The advancement of the Members of Ātiawa ki Whakarongotai through the development of their social, cultural, economic, and educational aspirations through competent leadership and effective, efficient, and totally accountable management of their commercial and non-commercial collective resources.

# RARANGI TAKE CONTENTS

Chair Report.....	2
Tumu Whakarae Report.....	3
Operations.....	6
Hauora – Health and Wellbeing.....	14
Iwi Māori Partnership Board.....	19
Taiao.....	20
National Iwi Chairs.....	21
Waikanae Jobs for Nature.....	22
Takutai Moana.....	26
Claims.....	29
Arts and Community.....	31
Asset Holding Company.....	34
Performance Report 2023-2024.....	38
Performance Report 2022-2023.....	53





# CHAIR REPORT



*Kei ngā uri manawa rahi o Ātiawa ki Whakarongotai tēnā koutou.*

*Me maumahara ana tātou ki a rātou ngā tini aituā e whakangaro atu ki te pō.*

*He mihi whakawhetai hoki ki te hunga e taimaha ana e māuiui ana, me kī, kia piki te ora, kia piki te kaha, kia piki te māramatanga i ngā wā katoa. Ko tēnei te pūrongo o ngā tino mahi o ngā kaitieki o Te Poari i te tau 2023 – 2024, e whakamōhio ake ki ngā tai o Te Kāhui Maunga o Kapakapanui me te iwi o Ātiawa ki Whakarongotai, 'i te iti i te rahi te katoa'.*

Tēnā koutou kātoa.

The Ātiawa ki Whakarongotai Charitable Trust presents the Annual Report 2023/2024.

We begin by honouring those of our whānau, hapū, and iwi who have passed away during this time, while also looking to the future with hope and determination.

This year marks a period of significant change, challenges, and growth. Despite navigating an evolving landscape, the Trust has remained committed to the wellbeing of the Iwi.

We farewellled Trustee Chris Gerretzen and welcomed Tracey Morgan as our new Trustee. Our Board is proudly represented by Aperahama Barrett, Janine Huxford, Te Raukura Soloman, and Andre Baker, who served as our Chairperson until June 2023. In June 2023, I had the honour of being elected as the new Chairperson, and I would like to take this opportunity to acknowledge Andre's dedicated service to the Trust over the past twelve years.

A key milestone was the appointment of our inaugural Tumu Whakarae (Chief Executive), Frank Hippolite, who has embraced the role with passion and vision. We look forward to the direction he will lead us in. I would like to thank the interview panel, which included whānau from the marae, kaumātua komiti, Asset Holding Company, and Board members.

The Board has committed to reviewing the Trust Deed and transitioning Alternate Trustee positions to full Trustee roles, as approved at previous AGMs and moving forward, we remain focused on building internal capabilities, ensuring our operations reflect the values and aspirations of our iwi.

We've strengthened our relationships with marae trustees, kaumātua, and key stakeholders to ensure inclusive decision-making in the best interests of all. We are grateful to the iwi members who continue to dedicate their time, expertise, and passion to the Trust.

The foundations for an inclusive future driven by the collective strength of our iwi have been laid. The Board looks forward to continuing this journey with you, building on our progress and setting a new direction for Ātiawa ki Whakarongotai Charitable Trust.

We celebrate our key achievements with you in this year's Annual Report.

Ngā mihi nui

*Cherie Seamark*

**Cherie Seamark, Chairperson  
Ātiawa ki Whakarongotai**

# TUMU WHAKARAE REPORT



Tena Koutou Katoa e te whānau o Te Ātiawa Ki Whakarongotai.

I te Tuatahi tenei te mihi ki te hunga mate, ratou kua wehe ki te Po, hoki atu ra, hoki atu ra, moe mai.

I was honoured to be appointed to the Tumu Whakahaere position in July 2023. Over the past year, I have gained a deep understanding of the workings of the Trust and the importance of supporting our governance team to bring the dreams and aspirations of our iwi to fruition. I am grateful for the unwavering support from our uri, who continue to stand alongside the Trust in the work we do on your behalf.

I would also like to extend my heartfelt thanks to everyone involved in my pōwhiri. I was truly humbled by the warm welcome I received at Whakarongotai.

This past year has been a busy time, particularly with the new direction of the Government. My focus has been on balancing sound business policy and procedures whilst ensuring the integrity of our financial management. At the same time, we have had to remain agile, adapting to both internal and external pressures. The Trust's focus remains steadfast in ensuring the dreams and aspirations of our tīpuna are realised. Our goal is clear—health, housing, education, and prosperity for future generations.

A key priority has been enhancing how we communicate and engage with our iwi and those representing us at various forums. I recognise the importance of transparency

and accountability, and throughout the year, I have worked to strengthen our internal capacity and capability to ensure the Trust remains resilient and forward-looking.

To ensure transparency and to provide the board with an accurate view of our financials moving forward, we have outsourced all financial services, of which you can read further, within this report.

A key initiative this year was the operations review of the Taiao unit, which has resulted in the Trust and iwi gaining full autonomy over all Taiao matters.

I am proud of the ongoing kotahitanga, and the fruitful meetings with the marae, kaumātua, and Pou Taiao komiti. I look forward to further collaboration with our iwi and Trustees to set the Trust's strategic direction.

Looking ahead, we will continue advancing our key priorities while embedding the changes that have come from active engagement with the beneficiaries of Ātiawa ki Whakarongotai. We will challenge ourselves to work more efficiently and seek partnerships that empower and strengthen the Mana Motuhake of Te Ātiawa ki Whakarongotai.

**Frank Hippolite**  
**Tumu Whakahaere | CE**  
**Te Ātiawa ki Whakarongotai**

## Entity Structure

The current structure for Te Ātiawa ki Kāpiti comprises the Charitable Trust, Te Ātiawa ki Whakarongotai Asset Holding Company Limited (“AKWL”) and Wharekohu Fisheries Limited (“WFL”), both of which are 100% owned subsidiary companies of the Trust. This structure was effectively developed from the framework offered by the Māori Fisheries Act 2004. The current structure is one where the Trust is the ultimate owner/kaitiaki and governing body for all assets and activities of the Trust.

## Main Sources of the Entity’s Cash and Resources

The main source of income is through external contracts.

## Main Methods Used by the Entity to Raise Funds

An annual grant from Ātiawa ki Whakarongotai Holdings Limited.

## Entity’s Reliance on Volunteers and Donated Goods or Services

As a pre-settlement entity we rely on and appreciate the voluntary services of many people.

## Output Measures

<b>Description and quantification (to the extent practicable) of the Entity’s outputs as per our guiding principles:</b>	<b>Actual This Year</b>	<b>Actual Last Year</b>
<b>Manaakitanga</b>		
Promote and fund Rangatahi hui and initiatives	1	1
Promote and hold hui about housing kaupapa	2	1
<b>Whanaungatanga</b>		
Increase registration database membership numbers	924	876
<b>Kotahitanga</b>		
<b>Communications</b>	200	200
Increase recipients of our monthly email pānui (25 per year) Audience participation: 32% often, 5% sometimes, 57% Rarely		
<b>Increase recipients with social media – Facebook:</b>		
Follows: 2491: +27.2% vs. April 31, 2022-Mar 31, 2023	323	252
Facebook reach: (44,158k) +356.2% vs. April 31, 2022-Mar 31, 2023	51,900	11,400
Content interactions: +348.4% vs. Mar 31, 2022 – Mar 31, 2023	6,600	1,031
Visits: +735% vs. April 31, 2022-Mar 31, 2023	16,400	2,000

## Looking to the year ahead

### Annual plan 2024-2025

---

#### Manaakitanga

- ▶ Progress housing opportunities
  - ▶ Enhance iwi connectivity through wānanga/events
- 

#### Whanaungatanga

- ▶ Increase registration database membership
  - ▶ Transition old website to new version
  - ▶ Release online registration portal within new website
  - ▶ Increase iwi representation and visibility in key community initiatives
- 

#### Kotahitanga

- ▶ Strengthen governance and leadership structures
- 

#### Kaitiakitanga

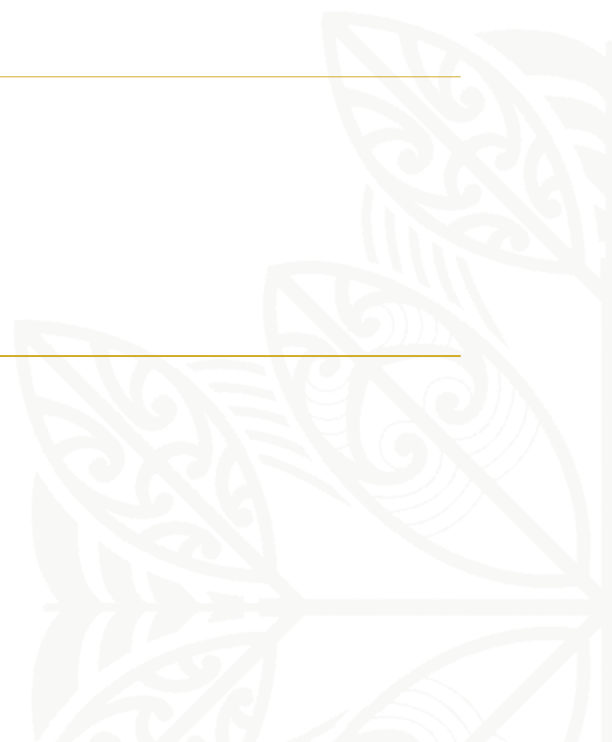
- ▶ Increase capacity and capability in the Taiao unit to support the Trust and iwi to uphold kaitiakitanga of our whenua
  - ▶ Strengthen iwi representation at national forums
  - ▶ Celebrate whānau success and collective achievements
- 

#### Rangatiratanga

- ▶ Review the trust Deed – 2019, motions not achieved
  - ▶ Eliminate Alternate Trustee positions and transition to 6 Full Trustees
  - ▶ Eliminate the term of 2 years and transition to 3-year term for elected trustees
  - ▶ Progress the transition of Hora Te Pai back to iwi governance
- 

#### Ūkaipotanga

- ▶ Manaakitanga – Support the marae charity contribution
  - ▶ Continue to pay insurance for Marae komiti
  - ▶ Support marae with kitchen improvements
  - ▶ Charitable distribution to the Marae komiti
- 



# OPERATIONS

## Transitions and New Beginnings

We farewelled Taiao contractor Te Konae, Melanie McCormack, and Ruby Mei Thomas. Long serving kaimahi Janine Davis resigned to focus on her health and to spend quality time with her whānau. Additionally, Tracey Morgan vacated her position as the Te Whakaminenga o Kāpiti iwi representative on the KCDC Public Art Panel, and we were pleased to welcome Vianney Parata as the new iwi representative.

Marilyn Smith joined the team as an interim member and in a voluntary capacity, bringing a background in administration and legal office experience. Her diverse skills included strong organisational abilities, attention to detail, and proficiency in managing complex tasks, whilst ensuring smooth office operations.

We were pleased to welcome Nora Moore from Greater Wellington Regional Council (GWRC), who has played a pivotal role in implementing new systems to support the Taiao space. We wish to express our thanks to GWRC, for supporting our Trust, by providing Nora and her unique set of skills. We also wish to thank Tania Parata and Monica Fraser for their unwavering support.

Supporting the Tumu Whakarae in this new chapter was Gabriel Canaan (Pou Tiaki), we welcomed Liam McAuliffe (Kairuruku Taiao) and Kelly Anne Mulligan (Kaipiringa), all of whom have made significant contributions to our operational progress.

For the first time since their establishment, we held a hui with our Taiao committee and Waikanae ki Uta ki Tai members.

We have planned an induction day for our new and incoming trustees, which will include invitations extended to members of the Marae Reservation Trustees, Kaumātua Committee, Whakapapa Membership Committee, Taiao and Pou Taiao Committees, Asset Holding Company, Wharekohu Fisheries, Te Puāwai (formerly the Town Centres Working Group), Waikanae Jobs for Nature, Takutai Moana / Te Pou Akau, and the Rongoā Collective.

Furthermore, we intend to create job descriptions for iwi members interested in applying to serve as our iwi representatives on five council committees. Appointments to these positions will be based on the required skills and knowledge.

## Enhancing Financial Operations

In January we had a change in finance operations to streamline procedures and enhance the future of our iwi. Previously, this had been managed in-house by various kaimahi. All responsibilities related to the finance function, debtors, creditors, reporting, coding, banking, and payroll were outsourced. This transition has provided a more streamlined approach to our processes, offering better visibility.

The financials for trust-owned entities should be combined with the trust financials to give a clear overall picture. Trust-owned entities include the Te Ātiawa Ki Whakarongotai Asset Holding Company and Wharekohu Fisheries Limited. Their finances have also been transferred.



## 2023-2024 Audit

The comments in the 2024 Audit were similar to the 2023 Audit regarding the combining of all financials. We are working to combine all three entities and see no reason why we shouldn't get an unqualified opinion next year.

- ▶ The **net worth** of the trust is \$4,241,790 which is an increase up from last year of \$2,496,960.
- ▶ **Total Revenue** is \$5,066,398 compared to last year's revenue of \$4,808,888.
- ▶ **Expenses** this year were \$3,321,569 compared to last year's expenses of \$3,745,061

We have all our reporting systems in place now and it will be a good starting point towards preparing for our settlement negotiations.

## Our Collective Strength: The people that support our vision

This extended group of whānau, hapū, and kaumātua make up the collective effort to move Ātiawa ki Whakarongotai forward and ensure that the iwi remains resilient, thriving, and culturally grounded.

### Ngā Whānau Kaupapa – Our Team

#### Ātiawa ki Whakarongotai Charitable Trust

**Trustees:** Cherie Seamark, Tracey Morgan, Janine Huxford, Aperahama Barrett, Te Raukura Solomon, Andre Baker.

#### Operations



**Tumu Whakarae**  
Frank Hippolite



**Pou Tiaki**  
Gabriel Canaan



**Kaipiringa**  
Kelly Anne Mulligan

#### Taiao



**Kairuruku Taiao**  
Liam McAuliffe

#### Asset Holding Company

**Directors:** Russell Spratt, Cherie Seamark, Ruben Kearney-Parata, 1 vacancy

#### Wharekohu

**Fishing Company Directors:** Russell Spratt, Cherie Seamark, Ruben Kearney-Parata

#### Waikanae Jobs for Nature – WJ4N

**Iwi Co-ordinator:** Kristie Parata

#### Takutai Moana

**Pou Akau:** Tihema Baker

#### Treaty Claims

**Committee:** Andre Baker, Tihema Baker, Mahinaaragi Baker, Bill Carter, Kirsten Hapeta, Paul Hapeta, Ria Holmes, John Barrett, Te Raukura Solomon, Reina Solomon, Josh Housiaux, Rawhiti Higgott, Toka Graham, Jordan Housiaux, George Jenkins

## Ngā Whakapiringa A-Roto – Relationships

Whakarongotai Marae	<i>Papakainga</i>	Lois McNaught (Chairperson), Sandra Edwards (Secretary), Brenda Tuuta (Treasurer)
Kaumātua Committee	<i>Papakainga</i>	Jack Rikihana (Chairperson), Les Mullen (Deputy Chairperson), Dayle Tamati-Ashby (Secretary), Hinga Cook, (Treasurer)
Membership Registration Committee	<i>Registrations</i>	Ted Parata, Rawhiti Higgott, Rangi Kearney, Cherie Seamark
Te Whakaminenga	<i>Local Government</i>	Andre Baker and Janine Huxford until June 2023, Cherie Seamark, Frank Hippolite
Taiao Committee	<i>Local Government</i>	John Barrett, Bill Carter, Rawhiti Higgott, Ted Parata
Te Puāwai (TCWG)	<i>Local Government</i>	Anne Maree Ellison, Rawhiti Higgott, Tracey Morgan, Simone Smith
Waikanae Ki Uta, Ki Tai	<i>Taiao</i>	Sharlene Davis, John Barrett, Les Mullen, Rawhiti Higgott
Iwi Māori Partnership	<i>Hauora</i>	Tio Taiaki
Kāpiti Community Health Network	<i>Hauora</i>	Cherie Seamark (Chairperson)
Raukawa Foundation	<i>Education</i>	Lois McNaught, Doris Lake
KCDC Arts Panel	<i>Ngā Toi</i>	Vianney Parata (appointed as the Te Whakaminenga rep)
Toi Mahara Trustee	<i>Ngā Toi</i>	Anne Maree Ellison

## Ngā Whakapiringa A-Waho – Relationships

Rongoā Art Collective	<i>Hauora</i>	Sharlene Davis (Pou Rongoa)
Raumati Kainga Ora Community Group	<i>Hāpori</i>	Anne Maree Ellison

## Communications

Ensuring that iwi members are informed and actively engaged in the Trust's activities is essential for good governance and the overall well-being of our iwi community. This is accomplished through transparent communication, providing opportunities for involvement, and keeping our members updated on key developments.

### Membership Engagement to increase registrations

Throughout the year, significant efforts were made to ensure our membership database was up-to-date and accurate. It was discovered that only 100 of the 870 registered members were receiving iwi pānui, prompting the need to update contact details. As part of our efforts, we increased registration pānui communications to encourage members to verify and update their information. A membership contact details update process was initiated, and a membership registration drive was held, where we invited members to register or update their details.

In addition, we made personal calls to registered members to confirm and update outdated contact details, and held multiple whakapapa komiti membership validation hui to ensure our records were accurate. Extra hui were also held to further ensure that all members were able to participate and confirm their information. A mihi to our whakapapa komiti who called on more than usual to validate our new members.

As such, we've seen a steady increase in iwi registrations, reflecting growing engagement. We've updated our membership database and are exploring the development of an online registration portal.

Members are encouraged to check and update all contact details regularly, to ensure that all communications are being received.



*Maia Black and Leilah Kimmie were contracted to consolidate and check membership databases.*





## New Website Development

A key communications initiative for the year was the continued development of a new iwi website. This project was focused on creating an improved platform for members to access important information, engage with iwi activities, and stay connected to the Trust. The development of this site is an ongoing priority to enhance our digital communication and provide a more user-friendly experience for iwi members. We have also prioritised the need to develop an online registration form.

## Vacancy Advertising

Throughout the year, we advertised several important vacancies within the iwi. These included positions for an iwi website developer and IT specialist, the Ātiawa Toa Hauora Partnership Board Manahautū role, an Iwi Administrator Officer, and Iwi Taiao Co-ordinator roles. These advertisements were shared with the community to ensure that members were aware of these opportunities and could apply or refer suitable candidates.

## Regular Communications

To keep members informed, we continued to distribute monthly pānui, sent via email through our updated membership database. These pānui were issued in April, May, July, August, September, October, December, January, and February, providing members with the latest updates on Trust activities, upcoming events, and key developments within the iwi.

This year, Ngapera Mei joined our communications team as a short-term contractor, helping to send out our Facebook promotions and pānui. We would like to acknowledge Ngapera for her assistance in ensuring our communications continued smoothly. As part of our strategy to enhance the visibility of Ātiawa ki Whakarongotai within both the local and national communities, we have begun the process of expanding our network of followers. Trustee Tracey Morgan and Kaipiringa Kelly Mulligan are currently managing this initiative on behalf of the Trust.

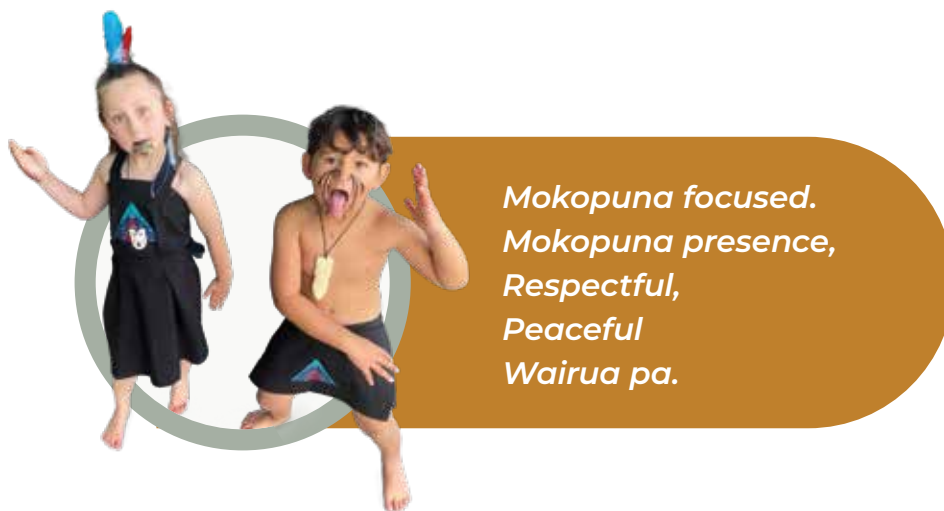
Through these communication efforts, we remain committed to maintaining transparency, fostering active involvement, and ensuring that iwi members are well-informed and engaged in the Trust's ongoing work.

## Engagement and Participation Opportunities for Iwi Members

Throughout the year, we extended multiple invitations to iwi members, encouraging your involvement in a variety of iwi, community and national initiatives. These included opportunities to participate in cultural celebrations, attend informative events, and engage in meaningful kōrero.

Some of these invitations were the “Manawatia a Matariki ki Kāpiti” celebration, which included a pōwhiri at Whakarongotai Marae to welcome our new Tumu Whakarae, Frank Hippolite, in July. We also organised an update session at the marae to share progress on the newly appointed CEO, governance and operational changes, and the current and future direction of the Trust’s strategic planning.

Another invitation was the ‘Karanga a iwi’, silent hiko to parliament, to march against the coalition Government’s Fast Track Legislation.



*Te Paea Seamark and Te Teira Lake*

An online Waikanae Library engagement kōrero was held to gather iwi feedback on the library’s future, including face to face kōrero. Further invitations included the “Kaipupuri taonga ki te ao whānui” event held at Te Papa, the Te Takiri o Te Ata Kaumātua Celebration at Te Raukura ki Kāpiti, and participation in the WJ4N Whakatipu Rākau Tree Planting Day, a collaborative event with the Waikanae community

In addition to these events, we also sought your valuable input through surveys, including the Waikanae Library Engagement Survey (conducted twice) and the Tatauranga Survey, which focused on the state of the reo and the performance of Ātiawa ki Whakarongotai. These engagement efforts provided opportunities for our iwi members to stay informed and to contribute to the decision-making processes.

### Review and Renew

The board have reviewed the current structure, the Trust Deed, alternate trustee position and term of tenure, implementing the following:

- ▶ New Conflict of Interest Policy developed for Governance manual
- ▶ Audit and Risk Policy written for Governance Manual
- ▶ Created the first Trustee induction booklet
- ▶ Commenced the Trust Deed review
- ▶ Initiated the transitioning of 2 alternate and 4 full trustee positions to become 6 full trustee positions, creating a balanced 3-in, 3-out division
- ▶ Initiated transitioning of a 2-year term to become 3 years.

## Celebrations

This year we celebrated the dedicated work of iwi representative Queenie Rikihana Hyland, who has served on the Toi MAHARA Gallery Board in a voluntary capacity since 2001. We extend our heartfelt thanks to Whaea Queenie for her unwavering commitment, whose work on behalf of the iwi is valued and appreciated. Ann-Maree Ellison (Ātiawa ki Whakarongotai) has been appointed to fill the position.

*Whaea Queenie Rikihana standing outside Mahara Iti, 2023*



It was a momentous occasion celebrating Whaea June Davis at her poroaki held at the Kāpiti Coast District Council, honouring her ten years of incredible service to the community and our iwi. Whaea June supported four mayors, along with past and present members of Te Whakaminenga o Kapiti. We wish her well in her retirement.

*Whaea June Davis pictured with Mayor Janet Holborow and koro Rakauoteora (Don) Te Maipi.*

We also celebrated Mātua Jack Rikihana for being recognised by His Majesty the King for his services to Māori, health governance, and the community, with an appointment as an Officer of the New Zealand Order of Merit (ONZM).



Successful Waitangi Day commemorations were held at Whakarongotai this year. The sharing of kai, kōrero, kapa haka performances from our two local primary schools to kaumātua, entertainment, Rongoā Māori, Ātiawa history and registrations of several new members, made this a day to remember. The event concluded with complimentary hangi offered to all registered members. We appreciate the hard work that our Marae Reservation trustees, kaumātua, and support team undertook to make this day such a success.





# HAUORA – HEALTH AND WELLBEING

## Manaaki Kāpiti

Following on from the COVID-19 funding, which supported the setup of Manaaki Kapiti, we were able to deliver health services and vaccinations to the community. The building at 92 Kāpiti Road was stripped and fitted out to make it suitable to deliver these health services. We acknowledge the work of all the Trust and staff involved in the preparation and delivery of health services. Staff numbers fluctuated during this period, regardless of staff changes, the clinical professionals delivered 5,283 vaccinations, and 4,410 people were seen in this reporting period. The total Income for the year to Manaaki Kāpiti was \$1,630,290 less expenses of \$1,635,915 resulting in a deficit of (\$5,625).

In August 2023, the government made significant changes to COVID-19 policies, including ending most pandemic-related restrictions. With the removal of mandates, Te Whatu Ora invoked the clawback clause on surplus Manaaki Kāpiti COVID funding. Despite this, the Board chose to continue supporting staff until September 2023, with management extended until November 2023.

The Inter Iwi Kaumātua Olympics were held at Ngā Purapura, bringing together kaumātua from across the region to engage in friendly competition and celebrate their vitality.

We provided crucial support to whānau affected by severe weather events and property damage in Kapiti, ensuring that those impacted received the help they needed during challenging times.



We also held an Iwi open day at Whakarongotai Marae and 'Tangata Whaikaha' community event, creating an opportunity for whānau to gather and connect with each other. In collaboration with Ngā Manu Reserve, we gifted local whānau free entry into the Reserve, further enriching their access to natural spaces for relaxation and recreation.

Additionally, to celebrate Te Wiki o Te Reo Māori, we supported various initiatives, including videos at Whakarongotai Marae, Kīwaha with the WJ4N crew, and a series of bounty of kai clips featuring matua Les Mullin. We also conducted a survey addressing issues faced by whānau using GP after-hours services and the Wellington Emergency Department, to help identify areas for improvement in healthcare access and service delivery.

We are grateful to Tania Parata and her team for their dedication throughout the pandemic, and to Kara Kearney-Parata for stepping into the Acting General Manager role.

## Kaumātua Healthy Homes Project

Despite the clawback, we continued key initiatives such as the Kaumātua Healthy Homes project through Manaaki Kapiti. Funding was secured through Wellington Community Trust with the aim to help kaumātua with fixing their homes. The project was managed by iwi member Shannon Parata.

The criteria process started with the winter well-being kaumātua interviews. Through these interviews, kaumātua were selected on a needs basis. We met with whānau and decided what was most urgent with them in their homes. Shannon led the pricing and finding out how we could improve their homes. The mahi was extremely rewarding. Shannon said, "It's been an honour completing this work for our kaumātua".

All the projects had a needs focus and required two quotes. Where possible whānau Māori matched those quotes to enable them to undertake the work'. 'Projects were priced high, and all came in under budget'.

Six kaumātua homes were identified and the work included replacing leaking roofs, installation of a heat pump, full bathroom rebuilds and replacement.

Throughout the year, the Kaumātua Healthy Homes Project was successfully completed and through the Trust, extended due to its positive impact on the wellbeing of our kaumātua.

## Te Kopaeara – He Ara Rongoā

A Taiao based, Rongoā well-living programme of integrated learning and support

Te Kopaeara is an innovative rongoā pilot programme developed through a partnership between the Ātiawa ki Whakarongotai Charitable Trust and The Rongoā Collective of the Ā.R.T. Confederation.

It aims to empower whānau in the Kāpiti region by fostering traditional Māori wellbeing knowledge and practices for daily life.

Inspired by local iwi wisdom and Taranaki traditions, Te Kopaeara draws on the tuatara kaitiaki, Kopaeara, symbolising spiritual protection and the sanctification of the learning journey. The programme invites ākonga to become kaitiaki of their own health and wellbeing.

The experiences shared by ākonga reflect the positive impact of the programme. We thank all those involved, and we look forward to further development and delivery of this programme.

For this reporting period, the evaluation summary highlights the experiences of ākonga who completed the first 2 of 3 Ara (cohorts) that ran from 9 March – 5 May 2024 and 23 March – 2 June 2024.

The three kopae (modules) included *Waiora*, *Whenua Ora*, and *Tangata Ora*, aligning with the three core principles of Rongoā practiced across the Ā.R.T. Confederation. Each Kopae involved 15 hours of learning, delivered through face-to-face weekend wānanga at Whakarongotai Marae, Ngā Manu Nature Reserve in Waikanae, or Whareroa at Queen Elizabeth II Park in Paekākāriki.



## Community Engagement

Designed to engage whānau from taiohi (youth) to pāhake (elders), the programme was promoted through whānau networks, the Collective’s client base, and an iwi social media campaign.

Te Kopaeara empowers ākonga to develop personal and collective wellbeing practices rooted in iwi knowledge, strengthening their connection to te ao Māori and the whenua. This kaupapa nurtures the next generation of kaitiaki, deepening understanding and practice of Rongoā within the community.

### Preliminary Evaluative Findings Quantitative – Summary Data Collected

Ākonga – ROI Actual / Target	40 / 50
% Ākonga – ROI Actual	80%
Ākonga – Actual Engaged	28
Ākonga per Ara/ Cohort	Ara 1 – 16 Ara 2 – 12
Ākonga – Attrition rate	+ Withdrawals – 11 ** Exit – 1
Ākonga – Learning and support provided	Ara 1 = 5 Ara 2 – 2

+ Reasons for withdrawal: Illness; sick tamariki; no childcare; change in circumstances; no longer able to commit; no transport; forgot; not ready; study commitments; no show

\*\* Reason for Exit: Relationship breakdown

**Ākonga feedback** included 100% reporting improved hauora outcomes for themselves and their whānau. At the start of the wānanga, ākonga shared their aspirations, which included learning to make infused oils, pani, and mirimiri, as well as exploring the pūrakau and whakapapa of Rongoā in relation to te Taiao and the Ātiawa rohe.





## Financial Summary

Detail	Funds Allocated	Remaining Balance	Balance
Opening balance as at 1/02/24			123,098.00
<b>Staff/ Contractors</b>			
Pou Rongoā (3); Iwi Kaitakawaenga (1); Rongoā Kaiawhina (1); Kaiarotake (1); Ringawera (1)	93,600.00	73,771.75	
<b>Programme Resources</b>			
Design & Resources	41,000.00	19,193.00	
<b>Venue Hireage</b>			
Whakarongotai Marae, Taiao Venue	5,000.00	2,800.00	
<b>Catering</b>			
Waiora (2); Whenua Ora (1)	22,600.00	14,297.90	
<b>Overheads</b>			
Rent; Printing/ Stationery; IT; Communications; Hui; Insurance; ACC; Management	13,653.00	13,035.35	
<b>Balance of funding remaining 31/03/24</b>	<b>175,853.00</b>	<b>123,098.00</b>	

**Exploring and defining Rongoā**, ākongā shared that their understanding went beyond medicinal therapies and mirimiri. They recognised rongoā as part of a deeper Māori knowledge system, grounded in tikanga, intrinsically linked to te Taiao, and a pathway to reclaiming tino rangatiratanga over their health and wellbeing.

*To learn what Rongoā is and how to use it in daily life and for health and wellbeing for myself, my whānau and whenua around me and in the correct way.*

*Ki ō waiaro, ki ō āhuatanga kātoa. I reira mohio ai koe, he aha te rongoā e tika māu?*

**Maramataka Integrated Learning** involved intensive instruction on the local Maramataka, its historical context, and its application in daily life. Resources provided included a Maramataka calendar, a journal for personal reflection, and instructions for making infused Rongoā tea. The delivery was aligned with the Māori lunar calendar, and ākongā reported positive experiences and benefits.

*I have learnt that it's not just about moon phases and energy and having the tools to help in the times which is easier to do when you understand the way; of how and why you feel a certain way.*

*Mana whenua, mana, tika, pono and aroha. By using this approach, we can take our health and wellbeing into our own hands and bring it back into our daily lives leading the future generations by example. Good health outcomes for whānau*



**Practical learning activities** were well received by ākongā, who demonstrated their ability to effectively apply what they had learned.

*Rongoā is part of everyday life. It is the essence of allowing yourself to use all your senses to find any raru that may be affecting you in any way. Then upon finding the core of it utilising karakia, kōrero, Rongoā, mirimiri and other tools to help.*

*Learning about taonga pūoro and using it to shake up the mauri.*

*Learning in a peaceful and calming environment to allow aspirations to come and go naturally and freely.*

### Transformational Change

Ākongā reported significant benefits from aligning with the Maramataka phases, with daily karakia, journaling, and Rongoā tea offering personal insights into their responses and use of Rongoā rākau.

*Journaling and utilising maramataka has helped check in with how I'm feeling and possible ways to cope with these feelings.*

*He timata tenei nē. Tuatahi for my journey mauri ora. Tuarua, mō tōku whānau, Tuatoru noa, tō tātou hapū, iwi. Tuawha, 'mō tō tātou whanaunga o te Taiao.*





**Interviews** revealed a deepening of ākonga connection to Ātiawatanga and rekindling of ties to marae and whenua. The age diversity in the cohort allowed for valuable intergenerational knowledge transfer, with many expressing a desire to integrate Rongoā practices into their lives and share them across generations.

**Training satisfaction** rated highly, including the venues, catering, resources, and teaching with all ākonga meeting the learning outcomes so far.

*I would love to be able to help myself so that I can take what I have learnt through to my networks (partner whānau friends and workmates).*

*To become interconnected with te Taiao and learn more about my te taha wairua to help my whānau with their own journey.*

### In summary

Te Kopaeara is enhancing participants' knowledge, skills, and connection to Te Ao Māori. Well-resourced, marae-based wānanga support their learning and growth, encouraging ākonga to return and deepen their Rongoā knowledge, which they then share with their whānau and communities.

Key aspects of the programme, including Maramataka journaling, daily reflection, and practical skills, have resonated strongly. Ara 3 will run from 23 June to 4 August 2024.

Ākonga are strengthening their capacity to be architects of their own health & wellbeing, through the reconnection to te Taiao and the revitalisation of Rongoā mātauranga, just like their tūpuna once enjoyed.

*Brought to you by Te Aka Whai Ora The Rongoā Collective of the Ā.R.T. Confederation in partnership with Ātiawa ki Whakarongotai Charitable Trust.*





# IWI MĀORI PARTNERSHIP BOARD

ĀTI AWA  
TOA HAUORA  
PARTNERSHIP BOARD

The Āti Awa Toa Hauora Partnership Board (ĀATHPB) was established in 2022 as one of 15 current Iwi Māori Partnership Boards (IMPBs) mandated by the Pae Ora (Healthy Futures) Act 2022.

With this important work continuing throughout the 2023-2024 period, the IMPBs have played an essential role in transforming the health and wellbeing system to support better health outcomes for Māori.

The ĀATHPB consists of a small group of mandated iwi leaders with representatives from Āti Awa ki Whakarongotai, Te Rūnanganui o te Te Āti Awa ki Te Upoko o Te Ika a Māui, Te Rūnanga o Ngāti Toa Rangatira and two taura here representatives.

The ĀATHPBs leads and influences across four Whaitua (areas/locations) – Porirua, Kapiti, Te Awa Kairangi and Poneke. Our functions include:

- ▶ collecting whānau voice and representing the hauora needs and aspirations of Māori
- ▶ monitoring and reporting back to whānau Māori on how the health sector is performing in relation to those needs and aspirations; and
- ▶ providing strategic advice on priorities for hauora commissioning in our rohe.

Hikitia Ropata (Chair) represents Te Rūnanga o Ngāti Toa Rangatira, Tio Taiaki (Deputy Chair) represents the interests of Ātiawa ki Whakarongotai and Hinemoa Priest represents the interests of Te Ati Awa ki Te Upoko o Te Ika a Māui. Tane Cassidy represents tangata whenua living in our rohe and Dr Vanessa Caldwell represents the clinical interests of Māori.



# TAIAO

We are pleased to have secured a new contract with Te Aka Whai Ora for the Taiao unit and Rongoā Collective, thanks to the efforts of Melanie McCormick and Sharlene Davis. This partnership ensures the continuation of vital services for our community.

A key issue that we have sought to resolve this year is the matter regarding Ngarara West A78A Māori Reservation. Through a Māori Land Court Facilitated Mediation held on June 11th, 2023, and subsequent actions, including an application for withdrawal sent in April 2024.

A Rāhui Moana was placed from 29 June to 5 July due to a recent death, showing our respect for cultural practices during a time of mourning and we implemented our Ātiawa whale stranding protocols for a fin whale that had washed up north of Pekapeka Beach.

We presented the Karewarewa Urupā Submission, with Council determining Kārewarewa urupā as a waahi tapu and an Independent Hearing panel supporting the submissions. Since then, the ruling has been overturned by the High Court, however given the deep significance of this whenua, it remains a priority for us.

Te Pūtahitanga o te Wai, represented by Sharlene Maoate-Davis, Rawhiti Higgot, Les Mullen, and Bill Carter, alongside three agency representatives, presented the 'Waikanae Whai Waiora'—the Waikanae ki uta ki tai Action Plan—at a meeting with the Governance Group of the Waikanae ki uta ki tai project, and a successful Wānanga Wai was held at Whakarongotai, providing valuable insights and engagement with whānau.

These events demonstrate ongoing commitment to strengthening our connections to the land, water, and each other, as we work together towards shared environmental and cultural goals.



*Matua Les Mullen with Jamaine Papara and his tamariki learning about Hii Tuna and Mahinga kai.*

# NATIONAL IWI CHAIRS

We became a member of the National Iwi Chairs Forum (NICF) this year, as an active participant and collaborator.

The NICF is a collective of chairpersons from 71 iwi groups across Aotearoa that aim to enhance mana motuhake (autonomy and self-governance) for Māori by facilitating the sharing of information and collaboration among iwi leaders.

The NICF meets four times a year at different marae throughout the country, discussing strategic topics that impact Māori communities. These meetings often include discussions with the New Zealand government on various issues, such as housing, healthcare, and education. The Forum has also established special interest working groups to address specific concerns like climate change and water management.

One notable initiative is the NICF Pandemic Response Group, formed in 2020 to address the impacts of COVID-19 on Māori communities. This group has been instrumental in advocating for policies that prioritize the health and well-being of Māori and progressing Māori voice at national level forums. Through this forum we received funding of \$390,000.00 from Wai Māori.

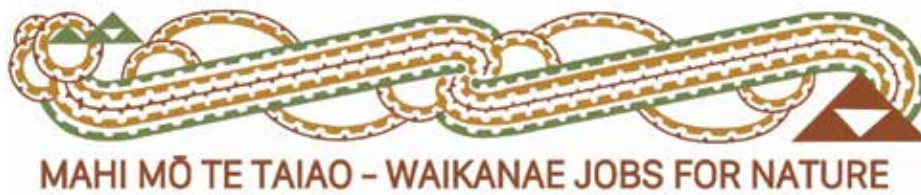




# WAIKANAE JOBS FOR NATURE

'Jobs for Nature' was a COVID-19 initiative supported by the Trust through our partnership with Ground Truth, which received \$8.4M in funding. Ātiawa ki Whakarongotai benefited by providing iwi members with job experience that assisted with further educational pathways and enhanced their employability.

The initiative aimed to prepare individuals for entry into the workforce, with the true value being the impact on the taura who participated. The Jobs for Nature team—Kristie Parata, and Mohi Edwin, supported by Peter Handford—have achieved outstanding results, connecting taura with their Awa, Whenua, and Maunga. We congratulate the team and thank them for their leadership and support. While Ātiawa ki Whakarongotai supported this initiative, we did not receive any funding. The contract is set to conclude in December 2024.



## **Waikanae Jobs for Nature Report for the period 1 April 2023 – 31 March 2024**

Mahi mō te Taiao – Waikanae Jobs for Nature (WJFN) project is a “Tiriti (Treaty) House” partnership initiative of Waikanae mana whenua Te Ātiawa ki Whakarongotai (TĀKW), Kāpiti Coast District Council (KCDC), Greater Wellington Regional Council (GWRC) and the Department of Conservation/Te Papa Atawhai (DOC). The project has been set up and managed by Paekākāriki based business, Groundtruth.

WJFN supports the Waikanae Ki Uta Ki Tai (Waikanae Mountains to the Sea) initiative. It enables early work on some of the key work areas under Waikanae Ki Uta Ki Tai kaupapa (see [waikanaeawa.org.nz](http://waikanaeawa.org.nz)), and is guided by the principles of Te Ātiawa ki Whakarongotai Kaitiakitanga Environmental Management Plan “Whakarongotai o te moana, Whakarongotai o te wā”.







### **Project Objective 1. Provide training, build capacity and employment**

The project builds conservation and restoration skills, focusing on developing the capacity of Ātiawa ki Whakarongotai. The project has a target of providing 92.7 FTE (full time equivalent years of employment) over its 4-year life.

We selected tauira three times a year for a 3-month course in conservation and land management. They receive NZQA-accredited training in practical skills, including chainsaw use, off-road vehicle operation, bird monitoring, fencing, and bushcraft, while also learning about Ātiawa ki Whakarongotai tikanga, values, and whanaungatanga. The hands-on training is applied around the awa, with a holistic approach to developing life skills.

Tauira gain practical skills, work experience, and build their CVs which enhances their future opportunities across the sector.

Tauira and kaimahi are encouraged to seek employment across the sector and are supported with contacts, CV writing and interview skills. Tauira and kaimahi have moved from the programme to employment in organisations such as Kāpiti Coast District Council, private conservation contractors, and businesses with many tauira being employed as kaimahi within WJ4N over the course of the project.

There has been growth within our project about taiao and conservation mahi, creating pathways for local, regional, and national opportunities in conservation mahi, while strengthening relationships with like-minded people and groups.

### **Project Objective 2. Ecological restoration across the Waikanae awa**

The project delivers environmental restoration across arawai, ngahere and whenua connected to the Waikanae awa. The mahi includes five practical tasks:

- ▶ **Waterway protection:** Fencing to exclude stock, planting around waterways. Wetland fencing and restoration. Development of a nursery at Otaraua to supply plants for these projects.
- ▶ **Weed control:** Clearing invasive species such as blackberry, gorse, banana passionfruit, climbing asparagus, pampas and others from restoration and remnant forest areas.
- ▶ **Animal control:** Managing pest animals predating native wildlife and browsing forests, with a particular focus on possum and goat control in mid catchment areas. Controlled animal work using pesticide or guns is by contractors.
- ▶ **Sustainable land management:** The way farmland, forests and all land uses are managed across the catchment affects potential erosion, water quality and biodiversity. Collaborating with landowners throughout the catchment, understanding their objectives, developing property plans and working on delivering restoration planting and projects.

- **Education and engagement:** The programme has engaged schools, community and landowners. School students have visited and been involved in sites along the length of the awa. They have spent time at Whakarongotai marae and developed a connection with Ātiawa ki Whakarongotai and our rohe (our backyard). Strong relationships including a highly engaging approach to working with schools are in place and have been a key to this success.

**Key Achievements (with 5 months to run)**

**Training and employment**

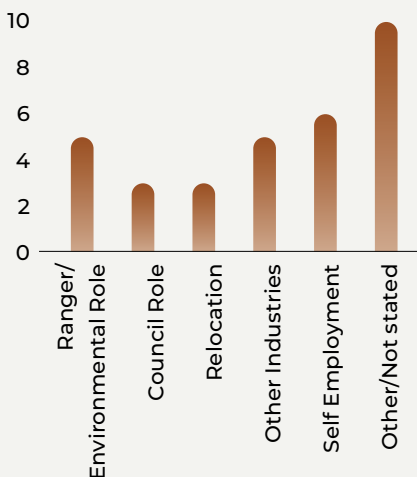
- 72% of taura whakapapa to Ātiawa ki Whakarongotai or Te Kotahitanga o te ART confederation (Ātiawa ki Whakarongotai, Ngāti Raukawa-ki-te-Tonga, Ngāti Toa Rangatira).
- Between 17 and 34 people have been employed as kaimahi at any one time. 65% of these kaimahi have been Te Ātiawa ki Whakarongotai or ART confederation affiliated.
- A total 89.3 FTE of employment have been provided as at the end of July 2024. With 5 months to go the project FTE target of 92.7 will be exceeded.

	Taura (Trainees)					Kaimahi (Employees)			
	2021	2022	2023	2024	Total	2021	2022	2023	2024
Te Ātiawa /ART Affiliated	12	15	12	9	48	9	17	22	22
Total	13	22	18	14	67	17	27	35	34
%	92%	68%	67%	64%	72%	53%	63%	63%	65%

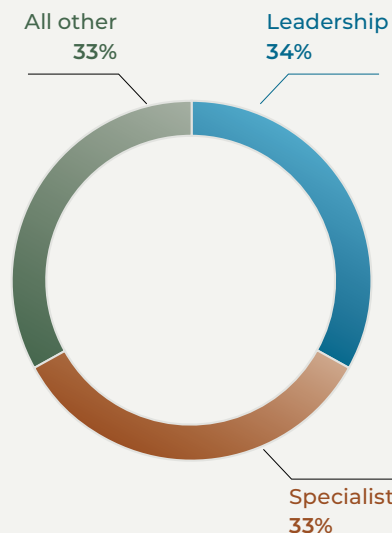
**Highlights Of 2024**

- 10 Whakarongotai Marae Visits
- Working with kaitiaki on 970 hectares of Māori whenua
- 3,000 ha of goat control
- 18 slept over in the wharenui
- 3km of fencing completed
- 35 hectares of weed control
- 33 people engaged at our Tūrangawaewae
- 1,000 hectares of monitoring
- 160 Tamariki experience the Awa

**Te Ātiawa/ART Affiliated Departures**



**Types of Roles**



**Roles as at 2024**

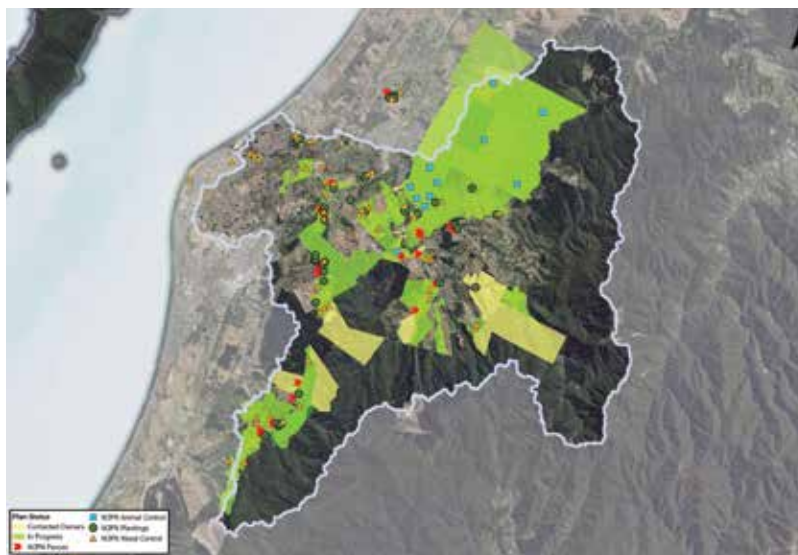
- Iwi Co-ordinator
- Training Manager
- Education Manager
- Nursery Manager
- Team Leader
- Animal Control Specialist
- Education Specialist
- Nursery Specialist
- Heke Kaitiakitanga Putaiao
- Taura
- Field Operators

## Restoration mahi for 2023-2024

Work completed includes:

- ▶ Monitoring: 1,000 hectares
- ▶ Fencing: 6,750 metres completed
- ▶ Planting: 130,000 native plants across steep slopes, riparian areas and wetlands
- ▶ Possum control: 800 hectares
- ▶ Goat control: 2,000 hectares
- ▶ Track establishment: 25 km of pest control tracks
- ▶ Weed control: 250 hectares including species such as blackberry, climbing asparagus, and wilding pine
- ▶ Planning and working with landowners: on properties covering 1,100 hectares of the catchment.
- ▶ Nursery development: Provision of a new native plant nursery at Otaraua Park.
- ▶ Pest control and biodiversity monitoring: 1,200 hectares
- ▶ Working with kaitiaki: 970 hectares of Māori whenua
- ▶ Iwi history and aspirations kōrero with Ben Ngaia
- ▶ 30 Whakarongotai Marae visits
- ▶ 67 slept over in the whareniui
- ▶ Iwi open day
- ▶ Otaraua community planting day
- ▶ Takamore, Otaraua & Waikanae awa plantings, including on whenua Māori
- ▶ Over 1,000 Tamariki experience Te Taiao
- ▶ Over 100 people engaged at our Tūrangawaewae

## Map of Waikanae Jobs for Nature Activity



*Map shows the properties where we have been actively working.*

Ka nui te mihi ki te whānau o Te Ātiawa ki Whakarongotai – mō tōu aroha, tōu manaakitanga, tōu tautoko ki te kaupapa nei – E mihi ana, e mihi ana.

**Kristie Parata**  
Iwi Co-ordinator

# TAKUTAI MOANA

Tihema Baker managed the Takutai Moana work and reported, In the latest chapter of our Takutai Moana application, that we have made significant strides during the evidence-gathering phase of the High Court process.

One of the pivotal outcomes has been the commissioning of an oral evidence-gathering programme, which promises to enrich our understanding and support our case. Additionally, we have successfully completed Milestone Reports 2 and 3, thanks to the diligent historical research conducted by Walghan Partners Ltd. To meet the High Court's mapping requirements, we also created a detailed geo-spatial map of our application area.

Throughout this period, all expenses related to the Takutai Moana application have been reimbursed by Te Arawhiti, as part of their funding scheme:

<b>Activity</b>	<b>Costs incurred 2023-2024 \$</b>	<b>Costs reimbursed 2023-2024 \$</b>
Project management	9,660.00	9,660.00
Historical research	23,391.00	23,391.00
Traditional evidence gathering	18,220.75	18,220.75
Engagement	0.00	0.00
Legal advice	40,647.40	40,647.40
<b>Total</b>	<b>91,919.15</b>	<b>91,919.15</b>



## Takutai Moana Report for the year ended 31 March 2024

### Overview

The Trust has an application for Customary Marine Title (CMT) and Protected Customary Rights (PCRs) under the Marine and Coastal Area (Takutai Moana) Act 2011. Our application is currently before the High Court. If successful we will be granted certain legal rights in the foreshore and seabed.

This year saw the delivery of a major milestone in the filing of our takutai moana evidence with the High Court in November 2023. Our evidence consisted of:

- ▶ An historical research report by expert historian Tony Walzl, which was informed by an oral evidence-gathering programme, and covered the following topics:
  - ▷ Traditional history
  - ▷ Land tenure
  - ▷ Ātiawa ki Whakarongotai Communities
  - ▷ Relationship with the takutai moana
- ▶ Briefs of evidence by various knowledge-holders within our iwi
- ▶ Geospatial maps of our rohe and key sites within it.

The purpose of this evidence is to support our application for CMT and PCRs, demonstrating that we have mana whenua and mana moana within our rohe. It covers our hekenga down from Taranaki alongside our Raukawa and Toa whanaunga, our settlement in the rohe, and the various ways that we exercise our mana in and around the takutai moana.

The gathering and preparation of this evidence has been my primary task since I stepped into the role of Pou Ākau, alongside the instruction of our legal team Whāia Legal in developing our case.

I have also been responsible for managing our relationship with our Confederation partners in the context of our respective applications. This has involved a number of hui to discuss the ways that our applications relate to and impact one another. We are well-aligned with Raukawa and our applications complement each other, however we have not been able to reach the same understanding with Ngāti Toa. There is significant disagreement about how CMT would be held or shared between our two iwi, if it is granted. While I am disappointed by this, the discussions have been constructive and with an aim to reach an outcome that both parties are satisfied with.

### Finances

In this financial year, all costs associated with this mahi are reimbursed by Te Arawhiti. This means the mahi is cost-neutral to the Trust. Our highest cost by a significant margin has been legal advice, a high proportion of which was incurred in the preparation of our evidence for filing in November 2023. Other notable costs include the final milestones of the historical research report and geospatial mapping.



North end, Waikanae Beach 2023

A summary of costs for this financial year are outlined below.

<b>Mahi</b>	<b>Costs \$</b>
Project management	13,317.00
Historical research	64,635.00
Traditional evidence gathering	6,132.38
Engagements	84.98
Legal advice and representation	328,322.82
<b>Total</b>	<b>412,492.18</b>

### Next Year

The next step in this process is the hearing of our evidence, alongside all other applicants in our hearing, in May-June 2024. At the time of writing, this hearing has already occurred. I will report on the outcome of that hearing, and our application, in the next annual report.

I would like to take this opportunity to thank our witnesses who provided evidence in support of our application: Ben Ngaia, Sharlene Maoate-Davis, Mahina-a-rangi Baker, John Barrett, Bill Carter, Andre Baker, and Jordan Housiaux. The strength of our evidence is testament to the mātauranga and experiences you generously gave to this kaupapa. He mihi nui, he mihi whakawhetai ki a koutou, ngā pūkenga o te iwi nei.

**Tihema Baker**  
**Pou Ākau – Project Manager, Takutai Moana Application**

# CLAIMS

The Claims Committee, including the Ā.R.T confederation have continued to progress important issues over the year.

With the conclusion of our claim's hearings, we now look forward to our claim's strategy.

The steps outlined by Te Arawhiti are as follows: first, we need to outline our whakapapa, name the hapū within our group, and identify our marae. Then, we must list the historical claims within the WAI process and specify the area covered by our claim.

Following that, we will need to identify any overlapping groups, report any engagement with the Crown resulting from overlapping claims, and inform the Crown of any Waitangi Tribunal reports that have already been carried out.

Finally, we start the mandating process which requires Hui and resolutions. We look forward to moving on our claim's strategy and thank Andre Baker for chairing the claims committee.

## Claim Management Progress Report

for the Reporting Period: 1 July 2023 – 31 January 2024 (Milestone 3)  
& 1 February 2024 – 31 August 2024 (Milestone 4)

The Claims Committee has continued to provide essential support for iwi claimants and operations, including participation in the Ngāti Raukawa phase of the Wai 2200 – Porirua ki Manawatū District Inquiry, covering the period from July 2023 to August 2024. This includes significant work on various key initiatives, with ongoing collaboration to ensure the Trust's efforts remain focused on iwi priorities and milestones.

### Key Developments:

#### Ngāti Raukawa Phase of the Wai 2200 Inquiry

The Trust continued to support iwi involvement in the Ngāti Raukawa phase of the Wai 2200 inquiry, meeting with the Crown Forestry rental Trust (CFRT) Contract Funding Manager, Cameron Herbert, in late February 2024. This meeting focused on the next steps, including the requirement for a new draft Business Plan and budget for the pre-mandate phase. We also aimed to discuss the potential recruitment of a Kaitauhere as we move into the final phase of the inquiry in 2025.

#### Claims Committee and Strategic Planning

We remained focused on landbanking surplus whenua and supporting the Takutai Moana (MACA) High Court application. Additionally, continued support for the Wai 1945 Kārewarewa urupā claim, was a priority for our iwi, with backing from Ngāti Toa and Ngāti Raukawa due to its historical significance stemming from the Kūititanga battle of 1839. This claim also holds national heritage status. The High Court application remains strongly supported by our Claimants, with continued input from tangata whenua, technical witnesses, and Counsel.

#### Marae and Hapū Development

The newly formed Ngāti Puketapu ki Paraparaumu hapū was supported, including a focus on their goal to establish a new marae within the Te Āti Awa rohe in Paraparaumu. The successful formation of a legal entity for the hapū is an important step toward achieving this vision.

## Wai 2200 Hearing Week 15

The rescheduled Hearing Week 15, hosted by Ngāti Kapumanwawhiti hapū at Te Pou o Tainui Marae in Ōtaki, renewed interest in participation by our claimants and iwi members and included a visit to Rangiātea Church, a sacred site for Āti Awa ki Whakarongotai, Ngāti Raukawa, and Ngāti Toa Rangatira (Ā.R.T.).

## Financial Reporting and Ongoing Support

Our financial reporting needs were met by accountant, Anna McKay from Openbook Solutions Limited, and the continued professional advice of Cameron Herbert, whose relationship with the Trust has been invaluable.

He mihi whakawhetai ki ngā kaiwhiriwhiri o Ngā Kaitiaki Rēti Ngahere Karauna, hei tautokohia ngā uri mokopuna o Ātiawa ki Whakarongotai i raro i te whetū o Tamatea-āio. Tēnā koutou katoa

André Baker  
Chair, Claims Committee



Karanga a iwi Silent Hikoī, Pōneke.



# ARTS AND COMMUNITY

It has been a busy year of arts initiatives and community projects, with key accomplishments for our iwi and we congratulate our Te Puāwai (formally Town Centres Working Group) who have led much of this, along with our many talented pool of artists.

We championed the renaming of Frater Lane to Te Ara Tangata, submitting letters of support and a verbal submission to the Waikanae Community Board, which was approved. We also finalised the storyboard proofs for the Marae and Te Ara Tangata projects.

We are grateful to the Kāpiti Coast District Council for their collaborative support, which has contributed to the success of many arts and community-focused projects.

## Supported projects this year included several key contributions to the local community:

- ▶ For the Maclean Park Amenities and Skate Park redevelopment, the Aramoana design work was completed by Kereama Taepa (Ātiawa ki Whakarongotai), building upon his previous installation, *Toroa*, which holds a prominent place in the park. The skatepark will open in two phases, December 2024 and February 2025. Input was also provided for the colour palette of the skatepark and guidance for the design elements of the amenity block mural.
- ▶ At the Paraparaumu Railway Station Transport Hub, Ra Vincent (Puketapu hapū) designed the pedestrian traffic light imagery, while Miriama Grace Smith (Ātiawa ki Whakarongotai) worked on the bus shelter murals. Tracey Morgan (Ātiawa ki Whakarongotai) created the wayfinding signage boards, pedestrian shelter and chatterbox seat designs, and Rawhiti Higgott (Ātiawa ki Whakarongotai) undertook writing of the historical storyboard in collaboration with Anthony Dreaver, featuring both English and Te Reo Māori text.



*Ra Vincent's traffic light silhouettes, represent young girl and teen boy walking to kura.*



*Vianney Parata with her Waikanae Museum mural, in Elizabeth Street, 2024.*

- ▶ In Waikanae, Vianney Parata (Ātiawa ki Whakarongotai) completed the Museum mural in Elizabeth Street, and we attended the waharoa blessing at Kapakapanui School, where the waharoa was crafted by Solomon Island artist Selwyn Teho.
- ▶ For the Toi MAHARA redevelopment, we worked alongside the gallery and council from concept design through to the external cultural thread landscaping and gifted the names for each new gallery space. We also attended the two-day official opening, where the exhibition *Toiora: Ki te Pō ki te Ao, The Art of Wellbeing* showcased works by nine Ātiawa artists. The reopening made even more special, with the appointment of Darcy Nicholas (Te Ātiawa) as the Patron of Toi MAHARA.



*Toi Mahara – overhead canopy frit designed by Tracey Morgan (Ātiawa ki Whakarongotai), 2023.*

**Waipuna Toi** (*Community space – Philipp Family Foundation*): A creative space for our community, Waipuna Toi acknowledges the waterways, streams and springs that ran and continue to run through the whenua.

**Te Manawa Toi** (*District Gallery – Coastlands Gallery*): The heart of the community, celebrating the artistic breath and spirit of art.

**Ringa Toi** (*Solo Artist's Gallery*): Imagination and creativity through the hands of an artist.

**Taonga Tuku Iho** (*Heritage Gallery*): Caring for and nurturing the treasures handed down from our ancestors.

**Te Kohinga** (*The Collection Store*)

- ▶ Local artist Kahurangi Tizzoni created the chorus cabinet mural next to Whakarongotai, supported by Vianney Parata.

Furthermore, we gifted the name ‘Te Ara Whetu’ (the Waikanae Library/Community Hub) to Council at a briefing in April with a formal gifting ceremony to be held at Whakarongotai Marae on 15 May and contributed to the new Mahara Place Playground designs.

At Waikanae Beach, Te hainatanga o Te Tiriti o Waitangi I Waikanae storyboard panels honouring Te Rangi Topeora were dedicated at the Waikanae Estuary, with text in both English and Te Reo Māori.

In Paraparaumu, Simone Smith (Ātiawa ki Whakarongotai) contributed to the Ngā uri o te Ngarara – Te Newhanga Kāpiti Community Centre project, including the needs assessment, survey promotion, attendance at their Ngāhina Trust AGM and dawn karakia blessing. We also supported the tikanga for a Waharoa blessing at the Cancer Society Kāpiti and attended the ceremony, where the waharoa was created by Teho.

We were also present at the Kaumātua Whakangahau at Te Raukura and attended the launch of the Maramataka 2023-2024, which was distributed to iwi members through the office. Developed by Hemaima Wiremu, Sharlene Maoate-Davis, Pania Solomon, and supported by Les Mullen, Kahu Ropata, and Manaaki Barrett, this maramataka was a Te Whakaminenga o Kāpiti-led project. Additionally, we took part in the WJ4N Whakatipu Rākau Tree Planting Day with the Waikanae community.

As we reflect on the year gone by, it's clear that our commitment to fostering the arts and supporting our community has never been more vibrant. Despite the challenges, we have remained busy and driven, achieving great strides and creating meaningful connections along the way. We look forward to continuing this momentum into the future, with the strength of our whānau guiding us toward even greater success in the year to come.



*Kahurangi Tizzoni with kaumātua Toka Graham, Hauangi Parata and Ivy Parata, 2024.*

# ASSET HOLDING COMPANY

We recognise the wealth of experience and strategic leadership within our iwi Asset Holding Company. Our team continues to build strong foundations and drive sustainable growth.

Over this period, a housing survey was sent to registered members through the office, to gather information on housing needs. Through responsible stewardship and a forward-focused approach, we are committed to securing the best outcomes for the iwi and future generations.

The Asset Holding Company has successfully secured funding from Te Puni Kōkiri to conduct an ongoing Housing Feasibility Study, signed a Memorandum of Understanding with Hāpai for social and economic housing outcomes, and is working closely with HUD and Hāpai through another MOU. We currently have several promising opportunities, including the Poplar Ave development and others north of Waikanae.

It's important for whānau to understand that the Trust has no funds to invest. As such, we rely heavily on our iwi relationships and reputation to broker deals that will result in positive outcomes for Ātiawa ki Whakarongotai.

## Asset Holding Company Report

for the year ended 31 March 2024 of Ātiawa ki Whakarongotai Holdings Limited

### Purpose:

Ātiawa ki Whakarongotai Holdings Limited (ĀkWHL) has a triple role in our iwi support and administration. Firstly, is the legal requirement of the Māori Fisheries Act 2005 to hold and safeguard the fisheries settlement quota and shares separate from the Parent Organisation, Ātiawa ki Whakarongotai Charitable Trust, as hei taonga tuku iho, a continuing asset for future generations. Secondly, both the Holding Company and the Trust are registered charitable organisations set up to benefit and protect our iwi members and their wider community. To that end, the earnings of the holding company provide financial support for the Trust, the marae and tangihanga. Finally, but of considerable importance, is the involvement with the wider Māori fishing industry interests through local, regional, and national inter-iwi representation.

### Activity:

#### 1. Fisheries

As part of our annual distribution to cultural activities held on Whakarongotai Marae, ĀkWHL has contributed koha of fresh fish to tangihanga, iwi gatherings, and other events.



ĀkWHL also holds a responsibility, on behalf of iwi members, to express prudent and effective management of our fisheries settlement quota (or ACE) and represent Ātiawa ki Whakarongotai in fisheries matters of national (e.g. Te Ohu Kaimoana AGMs & SGMs), regional (e.g. FMA8 Forum), local and commercial significance.

In the face of ongoing industry challenges in the commercial fisheries sector, we have seen steady returns on ACE through our enduring partnerships with Port Nicholson Fisheries, Sealord's, and Finest Kind Ltd.

## 2. Investments

Our finances are sound, and we have good reserves that guarantee earnings to support our commitment to the parent Charitable Trust. However, we have continued to experience a period where earnings from our maturing investments have been lower than in some previous years. In the current financial year, however, there is some recovery with the official cash rate (and interest rates) trending higher than in our last reporting period. We will continue to seek higher rates of return on our bank-based investments as and when appropriate to do so. As interest rates have begun to trend down, we have commenced a review of other investment options in keeping with our commitment to prudent investment while minimizing risk.

## 3. Housing

As previously reported, iwi housing initiatives that we have taken under the wing of the Asset Holding Company will be reported on separately. They have not yet required financial support as they have been separately funded through Te Puni Kōkiri.

## 4. Statutory requirements

In accordance with the statutory requirements of the Māori Fisheries Act 2005, directors declare that in the year under review no settlement quota has been sold or pledged as security.

## 5. Accounting

During the period we have engaged the professional accounting services of Rezure NZ. The team support our Xero bookkeeping. A record of accounts receivable and payable is maintained, and authorized payments are made on our behalf. This service has the added benefit of streamlining the capture of our financial activity and producing Financial Reports.

## 6. Working with the Tumu Whakarae/CEO

ĀkWHL, and the Chair in particular, has kept in contact with the CEO of the Parent on a regular basis. Kōrero has centred on streamlining accounting systems and processes (move to Xero), property investment, and other possible investment opportunities.

## 7. Personnel update

As previously reported, Board Member, Josh Housiaux resigned from the Board at our December 2023 meeting. Bill Carter retired in the previous period. Bill has provided advice regarding legacy systems and processes in a voluntary capacity to the Board as we have migrated to Xero.

With the Parent's approval and guidance, we hope to be seeking replacements for Bill and Josh in a timely manner.

## Wharekohu Fisheries Ltd

### Financial Performance

for year ending 31 March 2024

	<b>2024</b>	<b>2023</b>	<b>2022</b>	<b>2021</b>	<b>2020</b>
<b>Income</b>	<b>\$</b>	<b>\$</b>	<b>\$</b>	<b>\$</b>	
Interest received	1,161	6,776	1,273	1,273	1,273
Rent received	13,404	12,158	11,478	7,333	4,000
Sundry income	–	–	–	–	–
<b>Total income</b>	<b>14,565</b>	<b>18,934</b>	<b>12,751</b>	<b>8,606</b>	<b>5,273</b>
<b>Less Expenses</b>					
Accountancy fees	–	–	–	–	–
Bank Charges	137	102	102	94	97
Insurance	–	–	–	–	–
Licences and registrations	–	–	–	–	–
Rates	2,840	2,553	2,423	2,356	2,311
Repairs and maintenance	–	–	58	904	7,711
Rent paid	13,404	13,579	11,000	10,083	1,833
Refund Income Tax to AHC	–	–	–	–	–
Subscriptions	–	–	–	–	–
Telephones, tolls, internet	–	–	–	–	–
<b>Total expenses</b>	<b>16,381</b>	<b>16,234</b>	<b>13,583</b>	<b>13,437</b>	<b>11,952</b>
<b>Net profit before depreciation</b>	<b>(1,816)</b>	<b>2,700</b>	<b>(832)</b>	<b>(4,831)</b>	<b>(6,679)</b>
Less depreciation adjustment	70	80	90	100	115
<b>Net profit before tax</b>	<b>(1,886)</b>	<b>2,780</b>	<b>(742)</b>	<b>(4,731)</b>	<b>(6,564)</b>
Income Tax Expense	–	–	–	–	–
<b>Net profit/(loss)</b>	<b>(1,886)</b>	<b>2,780</b>	<b>(742)</b>	<b>(4,731)</b>	<b>(6,564)</b>

## Wharekohu Fisheries Ltd

### Balance Sheet

as at 31 March 2024

	2024 \$	2023 \$	2022 \$	2021 \$	2020 \$
<b>Current assets</b>					
ANZ-cheque account	742	737	1,139	1,750	1,602
ANZ term deposits	84,022	84,022	75,820	75,820	75,820
AHC advance	5,014	5,014	5,014	5,014	14
GST refund due	155	–	–	–	–
<b>Total current assets</b>	<b>89,933</b>	<b>89,773</b>	<b>81,973</b>	<b>82,584</b>	<b>77,436</b>
<b>Non-current assets</b>					
Property, plant est.	350,000	350,000	350,000	350,000	350,000
<b>Total assets</b>	<b>439,933</b>	<b>439,773</b>	<b>431,973</b>	<b>432,584</b>	<b>427,436</b>
<b>Current liabilities</b>					
Accounts payable	–	–	–	–	30
AHC advance	5,014	5,014	5,014	5,014	–
GST to pay	–	–	182	–	–
<b>Total liabilities</b>	<b>5,014</b>	<b>5,014</b>	<b>5,196</b>	<b>5,014</b>	<b>30</b>
<b>Net assets</b>	<b>434,919</b>	<b>434,759</b>	<b>426,777</b>	<b>427,570</b>	<b>427,406</b>
Represented by					
<b>Total equity</b>					
Share capital	1,000	1,000	1,000	1,000	1,000
Capital profit on asset	33,362	33,362	33,362	33,362	33,362
Land & building revaluation	–	–	–	–	110,000
Retained earnings	400,557	400,397	392,415	393,208	292,654
	<b>434,919</b>	<b>434,759</b>	<b>426,777</b>	<b>427,570</b>	<b>437,016</b>

## Ātiawa ki Whakarongotai Charitable Trust

# PERFORMANCE REPORT 2023-2024

Entity Information.....	39
Statement of Service Performance.....	40
Statement of Financial Performance.....	41
Statement of Financial Position.....	42
Statement of Cashflow.....	43
Statement of Accounting Policies.....	44
Notes to the Performance Report.....	46



# Entity Information

For the year ended 31 March 2024

<b>Legal Name of Entity:</b>	Ātiawa ki Whakarongotai Charitable Trust
<b>Type of Entity and Legal Basis (if any):</b>	Trust and Registered Charity
<b>Registration Number:</b>	CC45036
<b>Entity's Purpose or Mission:</b>	Ko Te Ātiawa nō runga i te rangi Ko te toki tē tangatanga i te rā Taringa mangō, o te kete ngē Ue ha! Ue ha!

Since 2005, this Trust has been the mandated body to speak on matters affecting the collective interest of Ngā Uri o Te Ātiawa ki Kāpiti. Ātiawa ki Whakarongotai means the iwi comprising every person who is descended from a primary ancestor of Te Ātiawa, Ngāti Tama, Ngāti Mutunga and Ngāti Maru Wharanui such primary ancestors being those who remained living in Waikanae after 1848 and who identify with the land from Kukutauaki to Whareroa (seaward) inland to Pukemore and to Maunganui northward to Kapakapanui and Pukeatua to Ngawhakangutu then westward to Kukutauaki.

The Trust continues to develop its capability to provide support to Ngā Uri o Te Ātiawa ki Kāpiti on political, social, cultural, economic, and environmental kaupapa.

## Entity Structure

The current structure for Ātiawa ki Kāpiti comprises the Trust, Ātiawa ki Whakarongotai Asset Holding Company Limited ("AKWL") and Wharekohu Fisheries Limited ("WFL"), both of which are 100% owned subsidiary companies of the Trust. This structure was effectively developed from the framework offered by the Māori Fisheries Act 2004. The current structure is one where the Trust is the ultimate owner/kaitiaki and governing body for all assets and activities of the Trust.

## Main Sources of the Entity's Cash and Resources

The main source of income is through external contracts.

## Main Methods Used by the Entity to Raise Funds:

An annual grant from Ātiawa ki Whakarongotai Holdings Limited.

## Entity's Reliance on Volunteers and Donated Goods or Services

The Trustees provide voluntary time in regards to the Trust, there is however an understanding that the Trustees are paid an honorarium based on hui attendance

## Contact details

Physical Address: 10 Parata Street, Waikanae, Kāpiti; Postal Address: PO Box 509, Waikanae;  
Phone/Fax: 04 293 1538; Email: [admin@teatiawakikapiti.co.nz](mailto:admin@teatiawakikapiti.co.nz); Website: <http://teatiawakikapiti.co.nz/>

# Statement of Service Performance

For the year ended 31 March 2024

The principles of Ātiawa ki Whakarongotai are guided by the words:

*“He Korōria ki te Atua;  
He Maungarongo i te whenua;  
He whakaaro pai ki ngā tāngata katoa”*

and include:

- ▶ The preservation and protection of the spiritual well-being of the Members of Ātiawa ki Whakarongotai; and
- ▶ The preservation of the dignity and integrity of the Members of Ātiawa ki Whakarongotai; and
- ▶ The advancement of the Members of Ātiawa ki Whakarongotai through the development of their social, cultural, economic, and educational aspirations through competent leadership and effective, efficient, and totally accountable management of their commercial and non-commercial collective resources.

# Statement of Financial Performance

For the year ended 31 March 2024

	Note	Actual This Year \$	Actual Last Year \$
<b>Revenue</b>			
Donations, fundraising and other similar revenue	1	12,250	25,000
Revenue from providing goods or services	1	4,514,045	4,626,997
Interest, dividends and other investment revenue	1	35,664	7,916
Other revenue	1	504,439	148,974
<b>Total Revenue</b>		<b>5,066,398</b>	<b>4,808,888</b>
<b>Expenses</b>			
Volunteer and employee related costs	2	916,964	1,578,228
Costs related to providing goods or services	2	1,955,655	2,071,984
Grants and donations made	2	5,950	9,898
Other expenses	2	443,000	84,951
<b>Total Expenses</b>		<b>3,321,569</b>	<b>3,745,061</b>
<b>Surplus/(Deficit) for the Year</b>		<b>1,744,829</b>	<b>1,063,827</b>

# Statement of Financial Position

For the year ended 31 March 2024

	Note	Actual This Year \$	Actual Last Year \$
<b>Assets</b>			
<b>Current Assets</b>			
Bank accounts and cash	3	2,994,479	3,082,246
Debtors and prepayments	3	554,551	851,373
Investments	3	932,944	118,255
<b>Total Current Assets</b>		<b>4,481,974</b>	<b>4,051,874</b>
<b>Non-Current Assets</b>			
Property, plant and equipment	4	248,517	302,331
<b>Total Non-Current Assets</b>		<b>248,517</b>	<b>302,331</b>
<b>Total Assets</b>		<b>4,730,491</b>	<b>4,354,205</b>
<b>Liabilities</b>			
<b>Current Liabilities</b>			
Creditors and accrued expenses	3	294,530	344,053
Employee costs payable	3	4,457	26,946
Unused donations and grants with conditions	3	189,714	1,486,246
<b>Total Current Liabilities</b>		<b>488,701</b>	<b>1,857,245</b>
<b>Total Liabilities</b>		<b>488,701</b>	<b>1,857,245</b>
<b>Total Assets less Total Liabilities (Net Assets)</b>		<b>4,241,790</b>	<b>2,496,960</b>
<b>Accumulated Funds</b>			
Accumulated surpluses or (deficits)	5	4,241,790	2,496,960
<b>Total Accumulated Funds</b>		<b>4,241,790</b>	<b>2,496,960</b>

This performance report has been approved by the Trustees, for and on behalf of Te Ātiawa ki Whakarongotai Charitable Trust:

Date: 10 December 2024

Signature:

Name: Rawiri Tawhai Bodsworth

Position: Chairperson



# Statement of Cash Flows

For the year ended 31 March 2024

	<b>Actual This Year \$</b>	<b>Actual Last Year \$</b>
<b>Cash Flows from Operating Activities</b>		
<i>Cash was received from:</i>		
Donations, fundraising and other similar receipts	12,250	25,000
Receipts from providing goods or services	3,655,956	6,080,664
Interest, dividends and other investment receipts	15,202	7,916
Net GST		32,047
<i>Cash was applied to:</i>		
Payments to suppliers and employees	2,011,128	3,627,681
Donations or grants paid	939,453	91,862
<b>Net Cash Flows from Operating Activities</b>	<b>732,827</b>	<b>2,426,085</b>
<b>Cash flows from Investing and Financing Activities</b>		
<i>Cash was applied to:</i>		
Payments to acquire property, plant and equipment	5,906	121,617
Payments to purchase investments	814,689	50,786
<b>Net Cash Flows from Investing and Financing Activities</b>	<b>(820,595)</b>	<b>(172,403)</b>
<b>Net Increase / (Decrease) in Cash</b>	<b>(87,768)</b>	<b>2,253,682</b>
Opening Cash	3,082,246	828,564
<b>Closing Cash</b>	<b>2,994,478</b>	<b>3,082,246</b>
<i>This is represented by:</i>		
<b>Bank Accounts and Cash*</b>	<b>2,994,479</b>	<b>3,082,246</b>

# Statement of Accounting Policies

For the year ended 31 March 2024

## Basis of Preparation

Ātiawa ki Whakarongotai Charitable Trust has elected to apply PBE SFR-A (NFP) Public Benefit Entity Simple Format Reporting – Accrual (Not-For-Profit) on the basis that it does not have public accountability and has total annual expenses of equal to or less than \$2,000,000. All transactions in the Performance Report are reported using the accrual basis of accounting. The Performance Report is prepared under the assumption that the entity will continue to operate in the foreseeable future.

## Goods and Services Tax (GST)

All amounts are recorded exclusive of GST, except for Debtors and Creditors which are stated inclusive of GST. In addition, the Trust received funding from Crown Forestry Rental Trust (CFRT). CFRT transactions do not contain GST due to CFRT not being required to account for GST as the nature of their activities, funding or reimbursing claimants their expenditure relating to the presentations and negotiations of claims before the Waitangi Tribunal, does not meet the definition of Goods and Services in Section 2 of the GST tax Act 1985. Funding received by claimants is by definition not subject to GST.

## Income Tax

Ātiawa ki Whakarongotai Charitable Trust is wholly exempt from New Zealand income tax having fully complied with all statutory conditions for these exemptions.

## Grants

Grants received are included in operating revenue. If particular conditions are attached to a grant that would require it to be repaid if these conditions are not met, then the grant is recorded as a liability until the conditions are satisfied.

## Bank Accounts and Cash

Bank accounts and cash in the Statement of Cash Flows comprise cash balances and bank balances (including short term deposits) with original maturities of 90 days or less.

## Investments

Bank term deposits for periods exceeding 90 days are classified as investments and are initially measured at the amount invested. Interest is subsequently accrued and added to the investment balance.

## Plant and Equipment

Plant and Equipment are recorded at cost less accumulated depreciation. Assets are depreciated over their estimated useful lives on a diminishing value basis. The estimated useful lives of the assets are:

- ▶ Computer Equipment                      2 years
- ▶ Improvements                              2.5 to 50 years
- ▶ Office Equipment                          2 years

## Changes in Accounting Policies\*

There have been no changes in accounting policies during the financial year (last year – nil).

# Notes to the Performance Report

For the year ended 31 March 2024

## Note 1 : Analysis of Revenue

Revenue Item	Analysis	This Year \$	Last Year \$
<b>Donations and other similar revenue</b>	Ātiawa ki Whakarongotai Holdings Limited	–	25,000
	Koha	250	–
	Grants not directly related to service delivery	12,000	–
	<b>Total</b>	<b>12,250</b>	<b>25,000</b>
<b>Revenue from providing goods or services</b>	Capital and Coast DHB	2,227,289	2,650,681
	Crown Forestry Rental Trust	45,458	36,803
	Environmental Consultancy	962,827	554,295
	Greater Wellington Regional Council	331,191	313,760
	Kāpiti Coast District Council	304,556	172,448
	Ministry of Social Development	273,924	629,154
	Ministry of Education	–	23,069
	M2PP	–	67,768
	Te Aka Whai Ora	158,269	–
	Other Revenue	210,531	179,021
<b>Total</b>	<b>4,514,045</b>	<b>4,626,997</b>	
<b>Interest, dividends and other investment revenue</b>	Interest	35,664	7,916
	<b>Total</b>	<b>35,664</b>	<b>7,916</b>
<b>Other revenue</b>	Other Revenue	504,439	148,974
	<b>Total</b>	<b>504,439</b>	<b>148,974</b>



Waikanae Jobs for Nature is delivering on training and capacity building for Ātiawa ki Whakarongotai and the Kāpiti community. Achieving environmental restoration work streams funded by DOC under the Jobs for Nature Programme. Aligning with Ātiawa ki Whakarongotai Kaitiakitanga Plan and action plan priorities identified by the Pou under Waikanae Ki Uta Ki Tai.

## Note 2 : Analysis of Expenses

Revenue Item	Analysis	This Year \$	Last Year \$
<b>Volunteer and employee related costs</b>	ACC	83	446
	Honorarium	72,170	32,047
	Salaries and Wages including Kiwisaver	844,711	1,545,735
	<b>Total</b>	<b>916,964</b>	<b>1,578,228</b>
<b>Costs related to providing goods or services</b>	Administration Costs	575,258	416,096
	Consultancy	101,898	109,263
	Consultancy – Manaaki	–	1,935
	Consultancy – Taiao	749,561	667,736
	Consultancy – Kaitakawaenga	1,354	–
	Crown Forestry Rental Trust	24,275	23,663
	Other Contract Costs	503,309	853,291
<b>Total</b>	<b>1,955,655</b>	<b>2,071,984</b>	
<b>Grants and donations made</b>	Koha	5,950	9,898
	<b>Total</b>	<b>5,950</b>	<b>9,898</b>
<b>Other expenses</b>	Audit Review Fee	1,148	2,000
	Depreciation	58,384	82,951
	Doubtful Debts	383,280	–
	Interest/debt servicing costs	189	–
<b>Total</b>	<b>443,000</b>	<b>84,951</b>	

### Note 3 : Analysis of Assets and Liabilities

Asset Item	Analysis	This Year \$	Last Year \$
<b>Bank accounts and cash</b>	Petty Cash	255	255
	ANZ Cheque Account	1,281,970	527,571
	ANZ 02 Account	1,470,116	2,303,755
	ANZ 10 Account	216,127	206,621
	ANZ 29 Account	26,106	43,627
	ANZ 30 Account	(95)	417
	<b>Total</b>		<b>2,994,479</b>
<b>Debtors and prepayments</b>	Accounts receivable	935,683	833,566
	Provision for doubtful debts	(383,280)	–
	Prepayments	–	15,660
	Withholding Tax	2,148	2,148
	<b>Total</b>		<b>554,551</b>
<b>Investments</b>	Short term deposits	932,944	118,255
	<b>Total</b>		<b>932,944</b>
Liability Item	Analysis	This Year \$	Last Year \$
<b>Creditors and accrued expenses</b>	Trade and other payables	122,698	199,612
	Accrued expenses	14,194	57,329
	GST Payable	157,638	87,112
	<b>Total</b>		<b>294,530</b>
<b>Employee costs payable</b>	Leave Liability	4,457	26,946
	<b>Total</b>		<b>4,457</b>
<b>Unused donations and grants with conditions</b>	Income in advance	189,714	1,486,246
	<b>Total</b>		<b>189,714</b>

## Note 4 : Property, Plant and Equipment

### This Year

<b>Asset Class</b>	<b>Opening Carrying Amount</b>	<b>Purchases</b>	<b>Sales / Disposals</b>	<b>Current Year Depreciation and Impairment</b>	<b>Closing Carrying Amount</b>
Office equipment	117,954	4,569	–	49,300	73,223
Computers (including software)	1,490	–	–	620	870
Improvements	182,887	–	–	8,463	174,424
<b>Total</b>	<b>302,331</b>	<b>4,569</b>	<b>–</b>	<b>58,383</b>	<b>248,517</b>

### Last Year

<b>Asset Class</b>	<b>Opening Carrying Amount</b>	<b>Purchases</b>	<b>Sales / Disposals</b>	<b>Current Year Depreciation and Impairment</b>	<b>Closing Carrying Amount</b>
Office equipment	115,050	70,214	–	67,310	117,954
Computers (including software)	2,979	–	–	1,489	1,490
Improvements	145,635	51,403	–	14,151	182,887
<b>Total</b>	<b>263,664</b>	<b>121,617</b>	<b>–</b>	<b>82,950</b>	<b>302,331</b>

## Note 5: Accumulated Funds

### This Year

Description	Capital Contributed by Owners or Members	Accumulated Surpluses or Deficits	Reserves	Total
Opening Balance	–	2,496,960	–	2,496,960
Surplus/(Deficit)	–	1,744,829	–	1,744,829
Closing Balance	–	4,241,789	–	4,241,789

### Last Year

Description	Capital Contributed by Owners or Members	Accumulated Surpluses or Deficits	Reserves	Total
Opening Balance	0	1,433,134	0	1,433,134
Surplus/(Deficit)	0	1,063,826	0	1,063,826
Closing Balance	0	2,496,960	0	2,496,960

## Note 6: Commitments & Contingencies

### Commitments

The Trust has committed to leasing 4 x motor vehicles, vehicle leases expiring 31 Dec 23, and photocopier rental, the cost is \$73,839 (2023; \$77,539)

### Contingent Liabilities and Guarantees

There are no contingent liabilities or guarantees as at balance date (2023; nil )



## Note 7: Other

### Significant Grants and Donations with Conditions which have not been Recorded as a Liability

There are no significant grants or donations with conditions which have not been recorded as a liability.

### Goods or Services Provided to the Entity in Kind

There are no goods or services provided to the entity in kind.

### Assets Used as Security for Liabilities

There are no assets used as security for liabilities.

## Note 8: Assets Held on Behalf of Others

There are no assets held on behalf of others.

## Note 9: Related Party Transactions

### Description of Related Party Relationship

Ātiawa ki Whakarongotai Charitable Trust is the sole shareholder in Ātiawa ki Whakarongotai Holdings Limited and this is a related party relationship in terms of the financial reporting standards. During the year Ātiawa ki Whakarongotai Holdings Limited provided a charitable distribution to the Trust totalling nil (2023; \$25,000). They also reimbursed costs totalling \$17,927.02 (2023; \$5,000). At balance date Ātiawa ki Whakarongotai Holdings Limited owed the Trust \$27,147 (2023; \$30,000) and the Trust owed Ātiawa ki Whakarongotai Holdings Limited \$0 (2023; nil). Cherie Seamark is a Director of Ātiawa ki Whakarongotai Holdings Limited representing the Charitable Trust, alongside Russell Spratt (Chair AHC), and Ruben Kearney-Parata.

- ▶ Andre Baker is contracted to complete various work within the claims portfolio, all on normal business terms totalling \$1,000. (2023; \$4,632), he owns He Mahi Tahī Tātou which invoices for work, all on normal business terms totalling \$1,353 (2023; \$8,570), Andre's daughter, Dr Mahina-ā-rangi Baker is a Director of Te Kōnae Limited which is contracted as the Pou Takawaenga for the Taiao/Environmental pou, all on normal business terms totalling \$516,405 (2023; \$744,950) and Andre's son, Tihema Baker, is contracted to lead the claims work, all on normal business terms totalling \$11,653 (2023; \$9,660).
- ▶ Cherie Seamark (Trustee) conducts various work for the health portfolio on behalf of the Trust, all on normal business terms totalling \$25,317 (2023; \$46,550).
- ▶ Gabriel Canaan, the husband of Janine Huxford (Trustee), and is employed by the Trust as Project Manager..
- ▶ John Barrett, the father of Aperahama Barrett (Trustee), sits on the Taiao Committee and Pou Taiao. Total received 2024 \$18,529 (2023: \$3,048).

All Trustees received honorarium to attend Hui-a-Mārama for the Charitable Trust Board and attendance to hui on behalf of the Trust. Total gross received for the year ending 31 March 2024:

▶ Baker, Andre	\$3,316.40
▶ Barrett, Pera	\$6,115.60
▶ Huxford, Janine	\$5,936.50
▶ Morgan, Tracey	\$5,744.70
▶ Seamark, Cherie	\$7,886.50
▶ Solomon, Te Raukura	\$3,058.20

### **Note 10: Events After the Balance Date**

No events were recorded post balance date.

Ātiawa ki Whakarongotai Charitable Trust

# PERFORMANCE REPORT 2022-2023

Entity Information.....	54
Statement of Service Performance.....	55
Statement of Financial Performance.....	57
Statement of Financial Position.....	58
Statement of Cashflow.....	59
Statement of Accounting Policies.....	60
Notes to the Performance Report.....	62

# Entity Information

For the year ended 31 March 2023

<b>Legal Name of Entity:</b>	Ātiawa ki Whakarongotai Charitable Trust
<b>Type of Entity and Legal Basis (if any):</b>	Trust and Registered Charity
<b>Registration Number:</b>	CC45036
<b>Entity's Purpose or Mission:</b>	Ko Te Ātiawa nō runga i te rangi Ko te toki tē tangatanga i te rā Taringa mangō, o te kete ngē Ue ha! Ue ha!

Since 2005, this Trust has been the mandated body to speak on matters affecting the collective interest of Ngā Uri o Te Ātiawa ki Kāpiti. Ātiawa ki Whakarongotai means the iwi comprising every person who is descended from a primary ancestor of Te Ātiawa, Ngāti Tama, Ngāti Mutunga and Ngāti Maru Wharanui such primary ancestors being those who remained living in Waikanae after 1848 and who identify with the land from Kukutauaki to Whareroa (seaward) inland to Pukemore and to Maunganui northward to Kapakapanui and Pukeatua to Ngawhakangutu then westward to Kukutauaki.

The Trust continues to develop its capability to provide support to Ngā Uri o Te Ātiawa ki Kāpiti on political, social, cultural, economic, and environmental kaupapa.

## Entity Structure

The current structure for Ātiawa ki Kāpiti comprises the Trust, Ātiawa ki Whakarongotai Asset Holding Company Limited ("AKWL") and Wharekohu Fisheries Limited ("WFL"), both of which are 100% owned subsidiary companies of the Trust. This structure was effectively developed from the framework offered by the Māori Fisheries Act 2004. The current structure is one where the Trust is the ultimate owner/kaitiaki and governing body for all assets and activities of the Trust.

## Main Sources of the Entity's Cash and Resources

The main source of income is through external contracts.

## Main Methods Used by the Entity to Raise Funds:

An annual grant from Ātiawa ki Whakarongotai Holdings Limited.

## Entity's Reliance on Volunteers and Donated Goods or Services

The Trustees provide voluntary time in regards to the Trust, there is however an understanding that the Trustees are paid an honorarium based on hui attendance.

## Contact details

Physical Address: 10 Parata Street, Waikanae, Kāpiti; Postal Address: PO Box 509, Waikanae;  
Phone/Fax: 04 293 1538; Email: [admin@teatiawakikapiti.co.nz](mailto:admin@teatiawakikapiti.co.nz); Website: <http://teatiawakikapiti.co.nz/>



# Statement of Service Performance

For the year ended 31 March 2023

## Description of Entity's Outcomes

The principles of Ātiawa ki Whakarongotai are guided by the words

*“He Korōria ki te Atua;  
He Maungarongo i te whenua;  
He whakaaro pai ki ngā tāngata katoa”*

and include::

- ▶ The preservation and protection of the spiritual well-being of the Members of Ātiawa ki Whakarongotai; and
- ▶ The preservation of the dignity and integrity of the Members of Ātiawa ki Whakarongotai; and
- ▶ The advancement of the Members of Ātiawa ki Whakarongotai through the development of their social, cultural, economic, and educational aspirations through competent leadership and effective, efficient, and totally accountable management of their commercial and non-commercial collective resources.

We are pleased to present the annual Outputs as tracked by the board for The Ātiawa Ki Whakarongotai Trust for the year 2023. Our organization has seen significant progress and positive outcomes across various areas, demonstrating our commitment to serving our community and achieving our goals. Here are the key outcomes for the year compared to the prior year:

**Membership:** Our estimate of the membership is 876 in 2023 as compared to 770 in 2022. This increase reflects the trust whānau wants to connect with the Iwi in the work our Tari has been doing.

**Hui and Contracts:** Despite a decrease in the number of hui conducted from 10 in 2022 to 6 in 2023, we remained actively engaged in Treaty claim processes, with one Treaty Claim and one Marine and Coastal Area Claim in progress. We look forward to progressing these.

**Manaaki Kāpiti:** We were fortunate to be able to administer COVID-19 vaccinations through funding from Te Whatu Ora. For the period 14 July 2022 to 27 October 2023 (Clinics and outreach combined) the total vaccines administered were 5,283 the people serviced were 4,410.

The financials are on another page but we just add information that Trust Net Worth: In 2023 increased to 2,479,197, which is up from 1,433,134 in 2022. This signifies our financial strength and stability, allowing us to further invest in our initiatives and projects for our Iwi.

**Output Measures:**

<b>Description and Quantification (to the extent practicable) of the Entity’s outputs as per our guiding principles:</b>	<b>Actual* This Year</b>	<b>Actual* Last Year</b>
Number of Hui	6	10
Treaty Claim in process	1	1
Treaty Claim settled	–	–
Marine and Coastal Area Claim in process	1	1
COVID-19 Community work – Vaccines administered	5,283	–
COVID-19 Community work – People seen	4,410	–
<b>Other Information</b>		
Membership	876	770
Trust Net worth	\$2,479,197	\$1,433,134
Increase in net worth	\$1,046,063	\$1,291,683

# Statement of Financial Performance

For the year ended 31 March 2023

	Note	Actual This Year \$	Actual Last Year \$
<b>Revenue</b>			
Donations, fundraising and other similar revenue	1	25,000	30,020
Revenue from providing goods or services	1	4,626,997	1,666,869
Interest, dividends and other investment revenue	1	7,916	990
Other revenue	1	148,974	44,308
<b>Total Revenue</b>		<b>4,808,888</b>	<b>1,742,188</b>
<b>Expenses</b>			
Volunteer and employee related costs	2	1,578,228	211,772
Costs related to providing goods or services	2	2,071,984	649,169
Grants and donations made	2	9,898	218
Other expenses	2	84,951	10,822
<b>Total Expenses</b>		<b>3,745,061</b>	<b>871,981</b>
<b>Surplus/(Deficit) for the Year</b>		<b>1,063,827</b>	<b>870,207</b>

# Statement of Financial Position

For the year ended 31 March 2023

	Note	Actual This Year \$	Actual Last Year \$
<b>Assets</b>			
<b>Current Assets</b>			
Bank accounts and cash	3	3,082,246	828,819
Debtors and prepayments	3	851,373	951,672
Investments	3	118,255	67,469
<b>Total Current Assets</b>		<b>4,051,875</b>	<b>1,847,959</b>
<b>Non-Current Assets</b>			
Property, plant and equipment	4	302,331	263,664
<b>Total Non-Current Assets</b>		<b>302,331</b>	<b>263,664</b>
<b>Total Assets</b>		<b>4,354,206</b>	<b>2,111,623</b>
<b>Liabilities</b>			
<b>Current Liabilities</b>			
Creditors and accrued expenses	3	344,053	387,170
Employee costs payable	3	26,946	7,281
Unused donations and grants with conditions	3	1,486,246	284,038
<b>Total Current Liabilities</b>		<b>1,857,246</b>	<b>678,489</b>
<b>Total Liabilities</b>		<b>1,857,246</b>	<b>678,489</b>
<b>Total Assets less Total Liabilities (Net Assets)</b>		<b>2,496,960</b>	<b>1,433,134</b>
<b>Accumulated Funds</b>			
Accumulated surpluses or (deficits)	5	2,496,960	1,433,134
<b>Total Accumulated Funds</b>		<b>2,496,960</b>	<b>1,433,134</b>

This performance report has been approved by the Trustees, for and on behalf of Te Ātiawa ki Whakarongotai Charitable Trust:

Date: 5 August 2024

Signature:

Name: Rawiri Tawhai Bodsworth

Position: Chairperson

# Statement of Cash Flows

For the year ended 31 March 2023

	<b>Actual This Year \$</b>	<b>Actual Last Year \$</b>
<b>Cash Flows from Operating Activities</b>		
<i>Cash was received from:</i>		
Donations, fundraising and other similar receipts	25,000	29,586
Receipts from providing goods or services	6,080,664	1,350,210
Interest, dividends and other investment receipts	7,916	1,187
Net GST	32,047	(8,572)
<i>Cash was applied to:</i>		
Payments to suppliers and employees	3,627,935	671,669
Donations or grants paid	91,862	218
<b>Net Cash Flows from Operating Activities</b>	<b>2,425,830</b>	<b>700,525</b>
<b>Cash flows from Investing and Financing Activities</b>		
<i>Cash was applied to:</i>		
Payments to acquire property, plant and equipment	121,617	194,635
Payments to purchase investments	50,786	672
<b>Net Cash Flows from Investing and Financing Activities</b>	<b>(172,403)</b>	<b>(195,307)</b>
<b>Net Increase / (Decrease) in Cash</b>	<b>2,253,427</b>	<b>505,218</b>
Opening Cash	828,564	323,346
<b>Closing Cash</b>	<b>3,081,991</b>	<b>828,564</b>
<i>This is represented by:</i>		
<b>Bank Accounts and Cash*</b>	<b>3,082,246</b>	<b>828,819</b>



# Statement of Accounting Policies

For the year ended 31 March 2023

## Basis of Preparation

Ātiawa ki Whakarongotai Charitable Trust has elected to apply PBE SFR-A (NFP) Public Benefit Entity Simple Format Reporting – Accrual (Not-For-Profit) on the basis that it does not have public accountability and has total annual expenses of equal to or less than \$2,000,000. All transactions in the Performance Report are reported using the accrual basis of accounting. The Performance Report is prepared under the assumption that the entity will continue to operate in the foreseeable future.

## Goods and Services Tax (GST)

All amounts are recorded exclusive of GST, except for Debtors and Creditors which are stated inclusive of GST. In addition, the Trust received funding from Crown Forestry Rental Trust (CFRT). CFRT transactions do not contain GST due to CFRT not being required to account for GST as the nature of their activities, funding or reimbursing claimants their expenditure relating to the presentations and negotiations of claims before the Waitangi Tribunal, does not meet the definition of Goods and Services in Section 2 of the GST tax Act 1985. Funding received by claimants is by definition not subject to GST.

## Income Tax

Ātiawa ki Whakarongotai Charitable Trust is wholly exempt from New Zealand income tax having fully complied with all statutory conditions for these exemptions.

## Grants

Grants received are included in operating revenue. If particular conditions are attached to a grant that would require it to be repaid if these conditions are not met, then the grant is recorded as a liability until the conditions are satisfied.

## Bank Accounts and Cash

Bank accounts and cash in the Statement of Cash Flows comprise cash balances and bank balances (including short term deposits) with original maturities of 90 days or less.

## Investments

Bank term deposits for periods exceeding 90 days are classified as investments and are initially measured at the amount invested. Interest is subsequently accrued and added to the investment balance.

## Plant and Equipment

Plant and Equipment are recorded at cost less accumulated depreciation. Assets are depreciated over their estimated useful lives on a diminishing value basis. The estimated useful lives of the assets are:

- ▶ Computer Equipment                      2 years
- ▶ Improvements                              2.5 to 50 years
- ▶ Office Equipment                          2 years

## Changes in Accounting Policies\*

There have been no changes in accounting policies during the financial year (last year – nil).

# Notes to the Performance Report

For the year ended 31 March 2023

## Note 1 : Analysis of Revenue

Revenue Item	Analysis	This Year \$	Last Year \$
<b>Donations and other similar revenue</b>	Ātiawa ki Whakarongotai Holdings Limited	25,000	30,000
	Koha	–	20
	<b>Total</b>	<b>25,000</b>	<b>30,020</b>
<b>Revenue from providing goods or services</b>	Capital and Coast DHB	2,650,681	831,733
	Crown Forestry Rental Trust	36,803	23,154
	Environmental Consultancy	554,295	225,917
	Greater Wellington Regional Council	313,760	273,702
	Kāpiti Coast District Council	172,448	158,162
	Ministry of Social Development	629,154	103,042
	Ministry of Education	23,069	–
	M2PP	67,768	–
	Other Revenue	179,021	51,160
	<b>Total</b>	<b>4,626,997</b>	<b>1,666,869</b>
<b>Interest, dividends and other investment revenue</b>	Interest	7,916	990
	<b>Total</b>	<b>7,916</b>	<b>990</b>
<b>Other revenue</b>	Other Revenue	148,974	44,308
	<b>Total</b>	<b>148,974</b>	<b>44,308</b>

Waikanae Jobs for Nature is delivering on training and capacity building for Ātiawa ki Whakarongotai and the Kāpiti community. Achieving environmental restoration work streams funded by DOC under the Jobs for Nature Programme. Aligning with Ātiawa ki Whakarongotai Kaitiakitanga Plan and action plan priorities identified by the Pou under Waikanae Ki Uta Ki Tai.

## Note 2 : Analysis of Expenses

Expense Item	Analysis	This Year \$	Last Year \$
<b>Volunteer and employee related costs</b>	ACC	446	137
	Honorarium	32,047	37,844
	Salaries and Wages including Kiwisaver	1,545,735	173,791
	<b>Total</b>	<b>1,578,228</b>	<b>211,772</b>
<b>Costs related to providing goods or services</b>	Administration Costs	416,096	82,789
	Consultancy	109,263	61,012
	Consultancy – Manaaki	1,935	4,333
	Consultancy – Taiao	667,736	294,569
	Crown Forestry Rental Trust	23,663	23,154
	Other Contract Costs	853,291	183,312
<b>Total</b>	<b>2,071,984</b>	<b>649,169</b>	
<b>Grants and donations made</b>	Koha	9,898	218
	<b>Total</b>	<b>9,898</b>	<b>218</b>
<b>Other expenses</b>	Audit Review Fee	2,000	950
	Depreciation	82,951	9,872
	<b>Total</b>	<b>84,951</b>	<b>10,822</b>

### Note 3 : Analysis of Assets and Liabilities

Asset Item	Analysis	This Year \$	Last Year \$
<b>Bank accounts and cash</b>	Petty Cash	255	255
	ANZ Cheque Account	527,571	458,670
	ANZ 02 Account	2,303,755	138,110
	ANZ 10 Account	206,621	201,629
	ANZ 29 Account	43,627	29,729
	ANZ 30 Account	417	426
		<b>Total</b>	<b>3,082,246</b>
<b>Debtors and prepayments</b>	Accounts receivable	833,566	939,724
	Prepayments	15,660	9,800
	Withholding Tax	2,148	2,148
		<b>Total</b>	<b>851,373</b>
<b>Investments</b>	Short term deposits	118,255	67,469
		<b>Total</b>	<b>118,255</b>
Liability Item	Analysis	This Year \$	Last Year \$
<b>Creditors and accrued expenses</b>	Trade and other payables	199,612	161,213
	Accrued expenses	57,329	151,160
	GST Payable	87,112	74,796
		<b>Total</b>	<b>344,053</b>
<b>Employee costs payable</b>	Leave Liability	26,946	7,281
		<b>Total</b>	<b>26,946</b>
<b>Unused donations and grants with conditions</b>	Income in advance	1,486,246	284,038
		<b>Total</b>	<b>1,486,246</b>



## Note 4 : Property, Plant and Equipment

### This Year

<b>Asset Class</b>	<b>Opening Carrying Amount</b>	<b>Purchases</b>	<b>Sales / Disposals</b>	<b>Current Year Depreciation and Impairment</b>	<b>Closing Carrying Amount</b>
Office equipment	115,050	70,214	–	67,310	117,954
Computers (including software)	2,979	–	–	1,489	1,490
Improvements	145,635	51,403	–	14,151	182,887
<b>Total</b>	<b>263,664</b>	<b>121,617</b>	<b>–</b>	<b>82,950</b>	<b>302,331</b>

### Last Year

<b>Asset Class</b>	<b>Opening Carrying Amount</b>	<b>Purchases</b>	<b>Sales / Disposals</b>	<b>Current Year Depreciation and Impairment</b>	<b>Closing Carrying Amount</b>
Office equipment	1,400	121,733	–	8,083	115,050
Computers (including software)	–	3,250	–	271	2,979
Improvements	–	147,153	–	1,518	145,635
<b>Total</b>	<b>1,400</b>	<b>272,136</b>	<b>–</b>	<b>9,872</b>	<b>263,664</b>

## Note 5: Accumulated Funds

### This Year

Description	Capital Contributed by Owners or Members	Accumulated Surpluses or Deficits	Reserves	Total
Opening Balance	–	1,433,134	–	1,433,134
Surplus/(Deficit)	–	1,063,826	–	1,063,826
Closing Balance	–	2,496,960	–	2,496,960

### Last Year

Description	Capital Contributed by Owners or Members	Accumulated Surpluses or Deficits	Reserves	Total
Opening Balance	–	562,927	–	562,927
Surplus/(Deficit)	–	870,207	–	870,207
Closing Balance	–	1,433,134	–	1,433,134

## Note 6: Commitments & Contingencies

### Commitments

The Trust has committed to leasing 4 x motor vehicles at balance date, recruitment expenses and photocopier rental, the cost is \$77,539 (2022; nil )

### Contingent Liabilities and Guarantees

There are no contingent liabilities or guarantees as at balance date (2022; nil )

## Note 7: Other

### Significant Grants and Donations with Conditions which have not been Recorded as a Liability

There are no significant grants or donations with conditions which have not been recorded as a liability.

### Goods or Services Provided to the Entity in Kind

There are no goods or services provided to the entity in kind.

### Assets Used as Security for Liabilities

There are no assets used as security for liabilities.

### Note 8: Assets Held on Behalf of Others

There are no assets held on behalf of others.

## Note 9: Related Party Transactions

### Description of Related Party Relationship

Ātiawa ki Whakarongotai Charitable Trust is the sole shareholder in Ātiawa ki Whakarongotai Holdings Limited and this is a related party relationship in terms of the financial reporting standards. During the year Ātiawa ki Whakarongotai Holdings Limited provided a charitable distribution to the Trust totalling \$25,000 (2022; \$30,000). They also reimbursed costs totalling \$5,000 (2022; \$4,359). At balance date Ātiawa ki Whakarongotai Holdings Limited owed the Trust \$30,000 (2022; \$504) and the Trust owed Ātiawa ki Whakarongotai Holdings Limited \$0 (2022; \$2,894). Cherie Seamark is a Director of Ātiawa ki Whakarongotai Holdings Limited representing the Charitable Trust, alongside Russell Spratt (Chair AHC), William Carter, Ruben Kearney-Parata and Josh Housiaux.

- ▶ André Baker (Chairperson) is contracted to complete various work within the claims portfolio, all on normal business terms totalling \$4,632 (2022; \$11,682), he owns He Mahi Tahi Tātou which invoices for work, all on normal business terms totalling \$8,570 (2022; \$2,538), his daughter, Dr Mahina-ā-rangi Baker is a Director of Te Kōnae Limited which is contracted as the Pou Takawaenga for the Taiao/Environmental, all on normal business terms totalling \$744,950 (2022; \$332,643) and his son, Tihema Baker, is contracted to lead the claims work, all on normal business terms totalling \$9,660 (2022; nil).
- ▶ Cherie Seamark (Trustee) was contracted to manage the COVID-19 response and to establish the set-up of the Manaaki Kāpiti COVID-19 response and various work for the health portfolio on behalf of the Trust, all on normal business terms totalling \$46,550 (2022; \$9,350).
- ▶ Chris Gerretzen (Trustee) is contracted to complete various work on behalf of the Trust, all on normal business terms totalling \$0 (2022; \$344).

- ▶ Kara Kearney (Operations Manager) was a Trustee until the 23rd of February 2022, while she was contracted to manage the COVID-19 response, to establish the set-up of the Manaaki Kāpiti COVID-19 response and manage the Taiao debtors, and received \$31,760 in this financial year for her services, all on normal business terms (\$2022: \$8,575). Kara was employed as the Operations Manager of Manaaki Kāpiti from 1 February 2022, all on normal business terms. Her son, Ruben Kearney-Parata, is contracted to do communication and research, all on normal business terms totalling \$30,486 (2022; \$6,038), her husband, Shannon Parata, was contracted to do building refurbishment work, all on normal business terms totalling \$27,176 (2022: \$16,650). From 14 September 2022 he was employed as a Kaimanaaki Matua.
- ▶ Gabriel Canaan, the husband of Janine Huxford (Trustee), was employed as project manager from 6 September 2022.
- ▶ John Barrett, the father of Aperahama Barrett (Trustee), sits on the Taiao Committee and Pou Taiao. Total received 2022 \$3,048 (2022: nil).

All Trustees received honorarium to attend Hui-a-Mārama for the Charitable Trust Board. Total gross received for the year ending 31 March 2023:

- ▶ André Baker (Chairperson) \$2,507
- ▶ Cherie Seamark (Deputy Chair) \$2,507
- ▶ Janine Huxford (Treasurer) \$2,670
- ▶ Chris Gerretzen (Trustee) \$3,607
- ▶ Aperahama Barrett (Trustee) \$2,857
- ▶ Te Raukura Solomon (Trustee) \$1,791

## **Note 10: Events After the Balance Date**

Manaaki Kāpiti closed on 31 October 2023 as the perceived COVID-19 risk had reduced. (2022; nil).





*Image: Mohi Edwin in the office!*





## ĀTIAWA KI WHAKARONGOTAI

Mai i Kūkūtauākī ki Whareroa, tatu atu ki Paripari Rere whakauta ngā tinitapu ko Wainui, ko Maunganui, Pukemore, Kapakapanui, Pukeatua, Ūngutu atu ki te pou whakararo ki Ngāwhakangutu.

Ko Ātiawa ki Whakarongotai e!

## Contact us

Ātiawa ki Whakarongotai Trust  
10 Parata Street, Waikanae 5250  
92 Kāpiti Road, Paraparaumu 5032

*Mailing address:*

PO Box 509, Waikanae 5250  
(04) 2931538

[teatiawakikapiti.co.nz](http://teatiawakikapiti.co.nz)

[office-coordinator@teatiawakikapiti.co.nz](mailto:office-coordinator@teatiawakikapiti.co.nz)